

U.S.B.I.A. REGION	RESERVATION	STATE	PROJ. NO.	SHEET No.	TOTAL
NORTHWEST	TULALIP	WA		1	20

TULALIP INDIAN RESERVATION

CONTRACT PLANS PAVEMENT REHABILITATION PROJECTS 2021



TULALIP INDIAN RESERVATION SNOHOMISH COUNTY TOTEM BEACH ROAD (BIA ROUTE 0052)

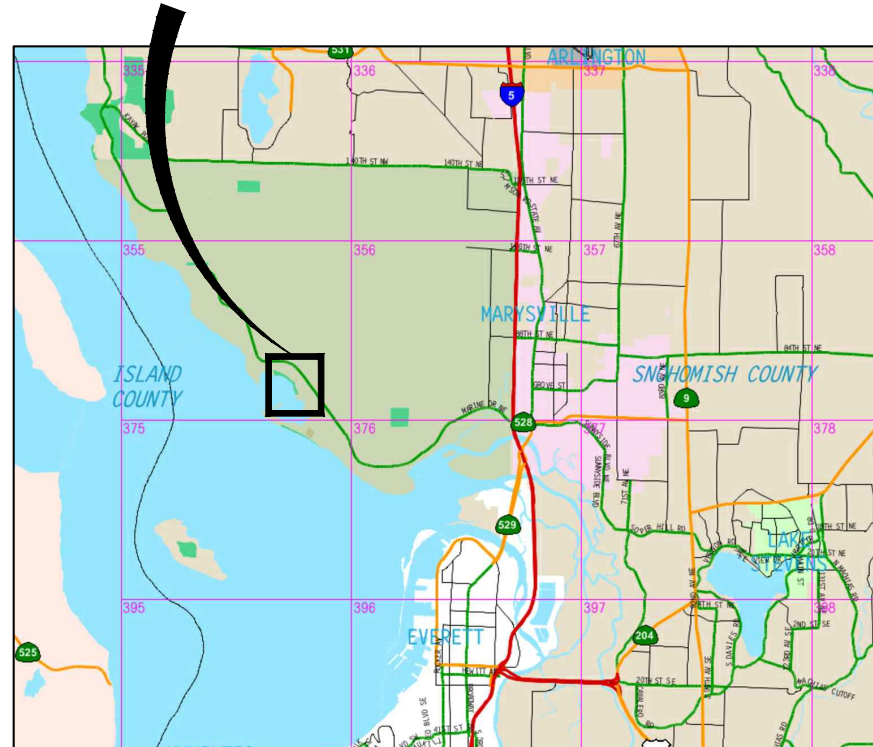
DESIGN STANDARDS:

WSDOT DESIGN MANUAL 2021
WSDOT STANDARD PLANS 2021
SNOHOMISH COUNTY ENGINEERING DESIGN AND DEVELOPMENT STANDARDS 2021

STANDARD SPECIFICATIONS:

WSDOT STANDARD SPECIFICATIONS FOR ROAD, BRIDGE, AND MUNICIPAL CONSTRUCTION 2022

PROJECT LOCATION



UTILITIES:

ZIPLY FIBER
13293 SMOKEY POINT BLVD
MARYSVILLE, WA 98271
ATTN: TIM RENNICK
OFFICE: (425) 263-4025
CELL: (425) 210-0333

SALISH NETWORKS
2601 88TH ST. NE
QUIL CEDA VILLAGE, WA 98271
ATTN: RICHARD BROWN
OFFICE: (360) 716-3277

VERIZON
OSP ENGINEERING
PO BOX 1003
EVERETT, WA 98200
ATTN: TIM RENNICK
OFFICE: (425) 327-8118

OWNER:

THE TULALIP TRIBES
6406 MARINE DR
TULALIP, WA 98271
ATTN: CHRISTINA PARKER
CELL: (360) 913-4205
OFFICE: (360) 716-5024

SNOHOMISH COUNTY PUBLIC UTILITIES DISTRICT (PUD)
210 E DIVISION STREET
ARLINGTON, WA 98223
ATTN: KALLEN SHAUGNESSY-RANDALL
OFFICE: (425) 783-4370

TULALIP TECHNOLOGY DATA SERVICES
2601 88TH ST. NE
QUIL CEDA VILLAGE, WA 98271
ATTN: KEVIN JONES
(360) 716-5150

TULALIP UTILITIES
3015 MISSION BEACH RD
TULALIP, WA 98271
ATTN: MIKE LESLIE
OFFICE: (360) 716-4840

ENGINEER:

PARAMETRIX
719 2ND AVE, #200
SEATTLE, WA 98104
ATTN: HAPPY LONGFELLOW
OFFICE: (206) 394-3700

INDEX TO DRAWINGS		
DWG NO.	SHT NO.	SHEET TITLE
GENERAL		
1	G1	COVER SHEET
2	G2	LEGEND & ABBREVIATIONS
3	SV1	SURVEY MAP AND HORIZONTAL CONTROL PLAN
4	SV2	SURVEY MAP AND HORIZONTAL CONTROL PLAN
5	SV3	SURVEY MAP AND HORIZONTAL CONTROL PLAN
6	SV4	SURVEY MAP AND HORIZONTAL CONTROL PLAN
7	RS1	ROADWAY SECTIONS
8	RS2	ROADWAY SECTIONS
9	DM1	DEMOLITION AND TESC PLAN
10	DM2	DEMOLITION AND TESC PLAN
11	DM3	DEMOLITION AND TESC PLAN
12	DM4	DEMOLITION AND TESC PLAN
13	DM5	DEMOLITION AND TESC NOTES AND DETAILS
14	RD1	ROADWAY AND STORMWATER PLAN & PROFILE
15	RD2	ROADWAY AND STORMWATER PLAN & PROFILE
16	RD3	ROADWAY AND STORMWATER PLAN & PROFILE
17	RD4	ROADWAY AND STORMWATER PLAN & PROFILE
18	DW1	DRIVEWAY SHEET
19	CH1	CHANNELIZATION AND SIGNING PLAN
20	CH2	CHANNELIZATION AND SIGNING PLAN



Know what's below.
Call before you dig.

LAYOUT: G1 PATH: U:\PSC\Projects\Clients\1598-Tulalip Tribes\554-1598-140_2021PmtRehabProjects\995\res\CAD\DWG\TOTEM_BEACH PLOTTED BY: SusliDmi DATE: Tuesday, April 26, 2022 4:24:45 PM

REVISIONS	DATE	BY	DESIGNED
			D. SUSLIKOV
			D. SUSLIKOV
			A. FISHER
			H. LONGFELLOW

ONE INCH AT FULL SCALE.
IF NOT, SCALE ACCORDINGLY

FILE NAME
PU5541598140-TOTEM-G1

JOB No.
554-1598-140

DATE
APRIL 2022



4/26/22

Parametrix
ENGINEERING · PLANNING · ENVIRONMENTAL SCIENCES

1019 39TH AVENUE SE, SUITE 100 | PUYALLUP, WA 98374
P 253.604.6600
WWW.PARAMETRIX.COM

PROJECT NAME
**PAVEMENT REHABILITATION 2021
TOTEM BEACH RD
THE TULALIP TRIBES**

TULALIP, WASHINGTON

COVER SHEET

DRAWING NO.
1 OF 20

G1

LAYOUT: G2
 PATH: U:\PSC\Projects\Clients\1598-Tulalip Tribes\1598-140_2021PvmRehabProjects\99Svcs\CADD\DWG\TOTEM BEACH
 PLOTTED BY: SusliDmi DATE: Tuesday, April 26, 2022 4:24:07 PM

LEGEND

DESCRIPTION	PROPOSED	EXISTING
ALIGNMENT CENTERLINE	---	---
MAJOR CONTOUR	=====	-----
MINOR CONTOUR	-----	-----
CHAINLINK FENCE	-----	-----
EDGE OF ASPHALT	=====	-----
CABLE TV OVERHEAD	-----	-----
FIBER OPTIC LOCATES	-----	-----
STORM DRAIN	=====	-----
SEWER	-----	-----
OVERHEAD POWER LINE	-----	-----
POWER	-----	-----
FACE OF CURB	=====	-----
BACK OF CURB	=====	-----
CONCRETE	[Pattern]	[Pattern]
DITCH BEDDING ROCK		[Pattern]

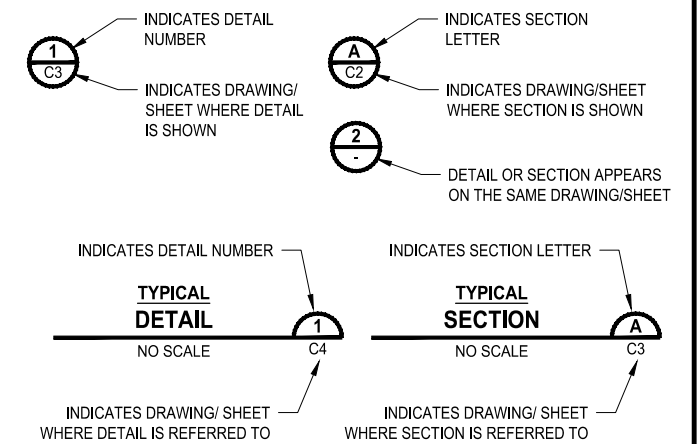
LEGEND

DESCRIPTION	PROPOSED	EXISTING
FOUND CASED MONUMENT		[Symbol]
FOUND REBAR AND CAP		[Symbol]
SET PK , CONTROL POINT		[Symbol]
CATCH BASIN	[Symbol]	[Symbol]
CATCH BASIN SOLID LID	[Symbol]	[Symbol]
MANHOLE SEWER	[Symbol]	[Symbol]
FIRE HYDRANT	[Symbol]	[Symbol]
WATER METER	[Symbol]	[Symbol]
WATER VALVE	[Symbol]	[Symbol]
STREET LIGHT POLE	[Symbol]	[Symbol]
POWER POLE	[Symbol]	[Symbol]
CABLE TV JUNCTION BOX	[Symbol]	[Symbol]
MAIL BOX	[Symbol]	[Symbol]
BOLLARD	[Symbol]	[Symbol]
SIGN	[Symbol]	[Symbol]
DECIDUOUS TREE		[Symbol]
CONIFER TREE		[Symbol]

ABBREVIATIONS

AP	ANGLE POINT
ASPH	ASPHALT
AVE	AVENUE
BVC	BEGIN VERTICAL CURVE
CB	CATCH BASIN
CEM	CEMENT
CL	CENTERLINE
CND	CONDUIT
CO	COUNTY, CLEANOUT
CONC	CONCRETE
CONST	CONSTRUCT, CONSTRUCTION
CSBC	CRUSHED SURFACING BASE COURSE
DEMO	DEMOLITION
DET	DETAIL
DIA	DIAMETER
DWG	DRAWING
E	EAST, EASTING
EA	EACH
EC	END OF CURVE
EL	ELEVATION
ENGR	ENGINEER
EOP	EDGE OF PAVEMENT
EVC	END VERTICAL CURVE
EXIST	EXISTING
FG	FINISH GRADE
FH	FIRE HYDRANT
FL	FLOW LINE
FM	FORCE MAIN
FT	FEET, FOOT
G	GAS
GB	GRADE BREAK
GV	GATE VALVE
HORIZ	HORIZONTAL
HP	HIGH POINT
IE	INVERT ELEVATION
IN	INCH
INCL	INCLUDE, INCLUDING
LP	LOW POINT
ME	MATCH EXISTING
MH	MANHOLE
MISC	MISCELLANEOUS
MON	MONUMENT
MIN	MINIMUM
N	NORTH, NORTHING
NTS	NOT STEEPER THAN
P	POWER
PC	POINT OF CURVE
PCC	PORTLAND CEMENT CONCRETE
PERF	PERFORATE, PERFORATED
PI	POINT OF INTERSECTION, PRESSURE INDICATOR
PT	POINT OF TANGENCY, POINT
PVI	POINT OF VERTICAL INTERSECTION
R	RADIUS
RD	ROAD
ROW	RIGHT OF WAY
RPM	RAISED PAVEMENT MARKER
SD	STORM DRAIN
SDMH	STORM DRAIN MANHOLE
SPEC	SPECIFICATION
SS	SANITARY SEWER
SSMH	SANITARY SEWER MANHOLE
T	TELEPHONE
TEL	TELEPHONE
TOC	TOP OF CURB
TYP	TYPICAL
VAR	VARIES
VC	VERTICAL CURVE, VITRIFIED CLAY
W	WATER, WEST
WSDOT	WASHINGTON STATE DEPARTMENT OF TRANSPORTATION

DETAIL AND SECTION DESIGNATION



Know what's below.
Call before you dig.

REVISIONS	DATE	BY	DESIGNED
			D. SUSLIKOV
			DRAWN D. SUSLIKOV
			CHECKED A. FISHER
			APPROVED H. LONGFELLOW

ONE INCH AT FULL SCALE. IF NOT, SCALE ACCORDINGLY
 FILE NAME: PU5541598140-TOTEM-G2
 JOB No: 554-1598-140
 DATE: APRIL 2022



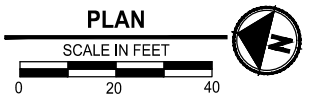
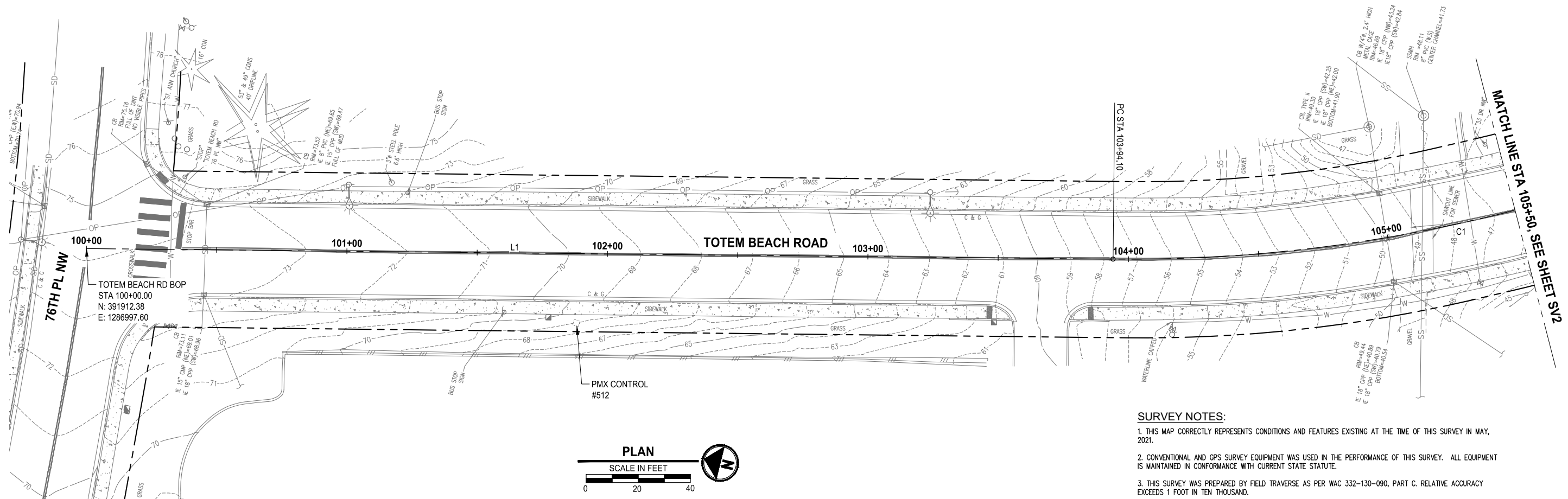
Parametrix
 ENGINEERING . PLANNING . ENVIRONMENTAL SCIENCES
 1019 39TH AVENUE SE, SUITE 100 | PUJALLUP, WA 98374
 P 253.604.6600
 WWW.PARAMETRIX.COM

PROJECT NAME
PAVEMENT REHABILITATION 2021
TOTEM BEACH RD
THE TULALIP TRIBES
 TULALIP, WASHINGTON

LEGEND & ABBREVIATIONS

DRAWING NO.
 2 OF 20
G2

PLOTTED BY: Svd/Dmi DATE: Tuesday, April 26, 2022 4:26:17 PM
 PATH: U:\P50\Projects\Clients\1598-Tulalip Tribes\1598-140-2021\pm\HReb\Projects\995\cs\cadd\DWG\TOTEM BEACH
 LAYOUT: SV1



SURVEY NOTES:

1. THIS MAP CORRECTLY REPRESENTS CONDITIONS AND FEATURES EXISTING AT THE TIME OF THIS SURVEY IN MAY, 2021.
2. CONVENTIONAL AND GPS SURVEY EQUIPMENT WAS USED IN THE PERFORMANCE OF THIS SURVEY. ALL EQUIPMENT IS MAINTAINED IN CONFORMANCE WITH CURRENT STATE STATUTE.
3. THIS SURVEY WAS PREPARED BY FIELD TRAVERSE AS PER WAC 332-130-090, PART C. RELATIVE ACCURACY EXCEEDS 1 FOOT IN TEN THOUSAND.
4. ALL SURFACE FEATURES AND INVERT STRUCTURE ELEVATION SHOWN HEREON WERE FIELD LOCATED AND MEASURED BY PARAMETRIX FOR THIS SURVEY. UNDERGROUND UTILITY LINES ARE BASED UPON A COMBINATION OF ASBUILT PLANS, SURFACE FEATURE MEASUREMENTS AND ONSITE UNDERGROUND UTILITY MARKINGS PERFORMED BY OTHERS.
5. THE SURVEYOR MAKES NO GUARANTEE THAT THE UNDERGROUND UTILITIES SHOWN COMPRISE ALL SUCH UTILITIES IN THE AREA, EITHER IN SERVICE OR ABANDONED. THE SURVEYOR FURTHER DOES NOT WARRANT THAT THE UNDERGROUND UTILITIES SHOWN ARE IN THE EXACT LOCATION INDICATED ALTHOUGH HE DOES CERTIFY THAT THEY ARE LOCATED AS ACCURATELY AS POSSIBLE FROM INFORMATION AVAILABLE.
6. RIGHT OF WAY INFORMATION SHOWN HEREON IS BASED ON PUBLIC RECORD INFORMATION PROVIDED BY THE SNOHOMISH COUNTY RECORDS. BOUNDARY LINES SHOWN ARE FOR REPRESENTATION PURPOSES ONLY AND SHOULD NOT BE USED FOR DESIGN ACTIVITIES THAT WILL RELY ON AN ACCURATE REPRESENTATION OF BOUNDARY INFORMATION.
7. THIS SURVEY WAS PERFORMED WITHOUT THE BENEFIT OF A TITLE REPORT, WHICH MAY REVEAL RESTRICTIONS OR EASEMENTS OF RECORD. ACCORDINGLY, NONE ARE SHOWN HEREON.

STATISTICS:

EQUIPMENT: TRIMBLE R10 GPS AND TRIMBLE S7 ROBOTIC TOTAL STATION
 METHODOLOGY: FIELD TRAVERSE AND GPS.
 MEETS OR EXCEEDS SURVEY STANDARD AS PER:
 WAC 332-130-050
 WAC 332-130-090
 WAC 332-130-100
 ALL SURVEY WORK OCCURRED IN MAY OF 2021.

HORIZONTAL DATUM (WSRN):

HORIZONTAL DATUM FOR THIS SURVEY IS NAD 1983(11), WASHINGTON STATE PLANE NORTH ZONE COORDINATE SYSTEM, U.S. SURVEY FEET, BASED ON THE WASHINGTON STATE REFERENCE NETWORK (WSRN) WITH VERIFICATION TIES TO THE FOLLOWING MONUMENT PUBLISHED BY WSDOT

POINT DESIGNATION: QUILCEDA
 NORTHING: 388056.032
 EASTING: 1307665.380

VERTICAL DATUM (WSRN):

VERTICAL DATUM FOR THIS SURVEY IS NAVD 88 BASED ON THE WASHINGTON STATE REFERENCE NETWORK (WSRN) WITH VERIFICATION TIES TO THE FOLLOWING MONUMENT PUBLISHED BY WSDOT
 POINT DESIGNATION: QUILCEDA
 ELEVATION: 19.997

PARAMETRIX CONTROL TABLE				
POINT NO.	NORTHING	EASTING	ELEVATION	DESCRIPTION
512	391722.95	1287014.89	68.76	SET HUB & TACK 112

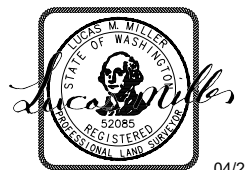
NOTE: SEE SHEETS SV2, SV3, AND SV4 FOR ADDITIONAL CONTROL POINTS

CURVE TABLE			
CURVE ID	LENGTH	RADIUS	DELTA
C1	340.98'	592.00'	33°00'05"

LINE TABLE			
LINE ID	LENGTH	BEARING	ALIGNMENT NAME
L1	394.10'	S13° 17' 01"E	TOTEM BEACH ROAD

REVISIONS	DATE	BY	DESIGNED
			D. SUSLIKOV
			D. SUSLIKOV
			A. FISHER
			H. LONGFELLOW

ONE INCH AT FULL SCALE.
 IF NOT, SCALE ACCORDINGLY
 FILE NAME
 PU5541598140-TOTEM-SV
 JOB No.
 554-1598-140
 DATE
 APRIL 2022



04/26/2022

Parametrix
 ENGINEERING · PLANNING · ENVIRONMENTAL SCIENCES
 1019 39TH AVENUE SE, SUITE 100 | PUYALLUP, WA 98374
 P 253.604.6600
 WWW.PARAMETRIX.COM

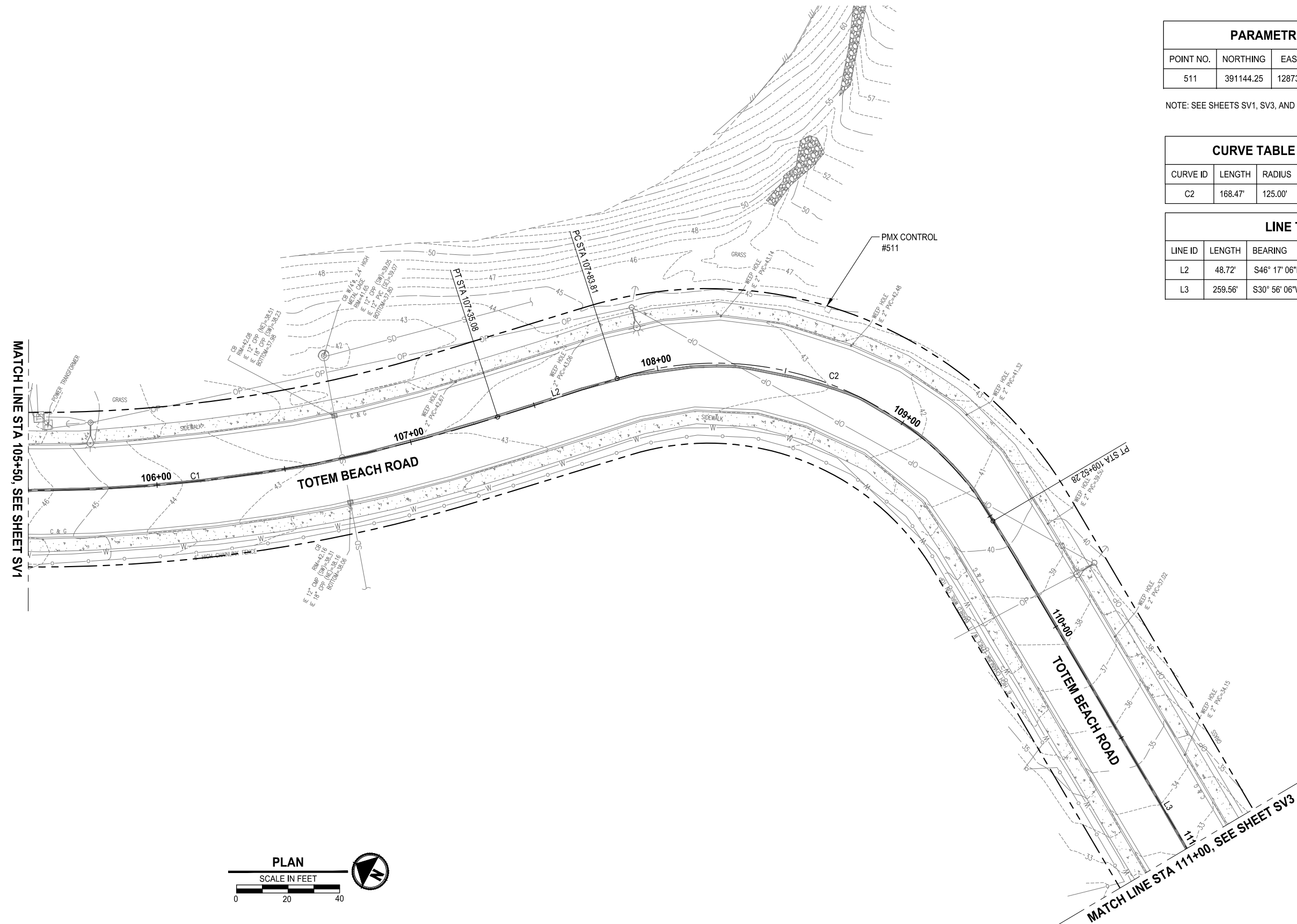
PROJECT NAME
PAVEMENT REHABILITATION 2021
TOTEM BEACH RD
THE TULALIP TRIBES
 TULALIP, WASHINGTON

SURVEY MAP AND
HORIZONTAL CONTROL PLAN

DRAWING NO.
 3 OF 20
SV1



PATH: U:\PSO\Projects\Clients\1598-TulipTribes\1598-140-2021PmtRehab\Projects\995\cadd\dwg\TOTEM_BEACH_LAYOUT_SV2 DATE: Tuesday, April 26, 2022 4:27:06 PM PLOTTED BY: SushDmi

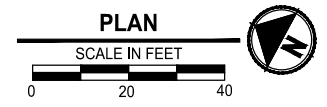


PARAMETRIX CONTROL TABLE				
POINT NO.	NORTHING	EASTING	ELEVATION	DESCRIPTION
511	391144.25	1287353.06	44.19	SET HUB & TACK 111

NOTE: SEE SHEETS SV1, SV3, AND SV4 FOR ADDITIONAL CONTROL POINTS

CURVE TABLE			
CURVE ID	LENGTH	RADIUS	DELTA
C2	168.47'	125.00'	77°13'12"

LINE TABLE			
LINE ID	LENGTH	BEARING	ALIGNMENT NAME
L2	48.72'	S46° 17' 06"E	TOTEM BEACH ROAD
L3	259.56'	S30° 56' 06"W	TOTEM BEACH ROAD



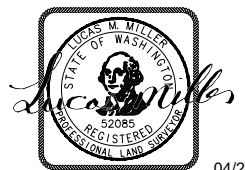
REVISIONS	DATE	BY	DESIGNED
			D. SUSLIKOV
			D. SUSLIKOV
			A. FISHER
			H. LONGFELLOW

ONE INCH AT FULL SCALE.
IF NOT, SCALE ACCORDINGLY

FILE NAME
PU5541598140-TOTEM-SV

JOB No.
554-1598-140

DATE
APRIL 2022



04/26/2022

Parametrix
ENGINEERING · PLANNING · ENVIRONMENTAL SCIENCES

1019 39TH AVENUE SE, SUITE 100 | PUYALLUP, WA 98374
P 253.604.6600
WWW.PARAMETRIX.COM

PROJECT NAME
**PAVEMENT REHABILITATION 2021
TOTEM BEACH RD
THE TULALIP TRIBES**
TULALIP, WASHINGTON

**SURVEY MAP AND
HORIZONTAL CONTROL PLAN**

DRAWING NO.
4 OF 20

SV2

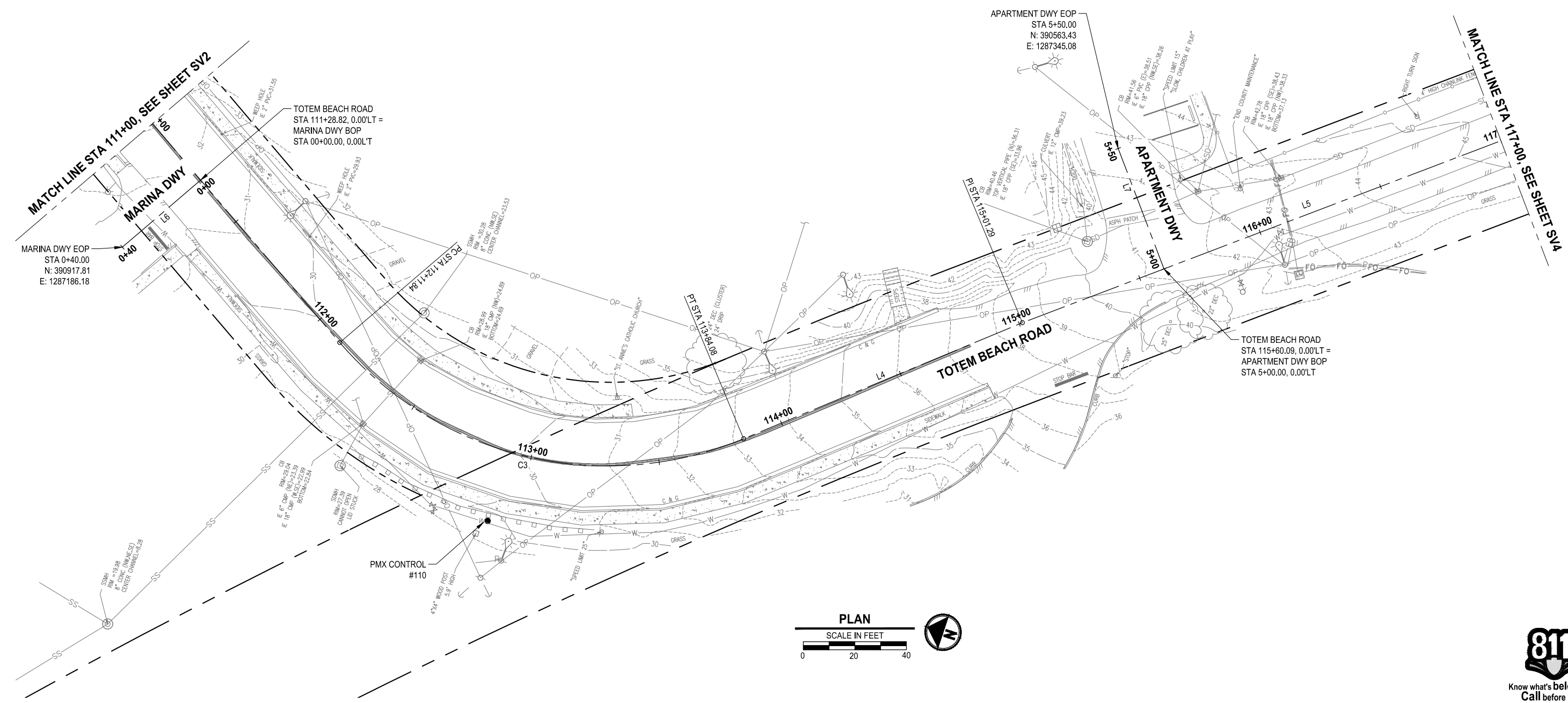
PATH: U:\PSO\Projects\Clients\1598-Tulip Tribes\1598-140-2021PmtRehab\Projects\995\cadd\DWG\TOTEM_BEACH_LAYOUT: SV3 PLOTTED BY: SualDimi DATE: Tuesday, April 26, 2022 4:28:12 PM

CURVE TABLE			
CURVE ID	LENGTH	RADIUS	DELTA
C3	172.24'	137.00'	72°02'02"

PARAMETRIX CONTROL TABLE				
POINT NO.	NORTHING	EASTING	ELEVATION	DESCRIPTION
106	393085.85	1307859.64	42.01	SET PK

NOTE: SEE SHEETS SV1, SV2, AND SV4 FOR ADDITIONAL CONTROL POINTS

LINE TABLE			
LINE ID	LENGTH	BEARING	ALIGNMENT NAME
L4	117.21'	S41° 05' 56"E	TOTEM BEACH ROAD
L5	1048.71'	S39° 19' 12"E	TOTEM BEACH ROAD
L6	40.00'	N59° 03' 54"W	MARINA DWY
L7	50.00'	N50° 40' 48"E	APARTMENT DWY



REVISIONS	DATE	BY	DESIGNED
			D. SUSLIKOV
			D. SUSLIKOV
			A. FISHER
			H. LONGFELLOW

ONE INCH AT FULL SCALE.
IF NOT, SCALE ACCORDINGLY

FILE NAME
PU5541598140-TOTEM-SV

JOB No.
554-1598-140

DATE
APRIL 2022



04/26/2022

Parametrix
ENGINEERING · PLANNING · ENVIRONMENTAL SCIENCES

1019 39TH AVENUE SE, SUITE 100 | PUYALLUP, WA 98374
P 253.604.6600
WWW.PARAMETRIX.COM

PROJECT NAME
**PAVEMENT REHABILITATION 2021
TOTEM BEACH RD
THE TULALIP TRIBES**
TULALIP, WASHINGTON

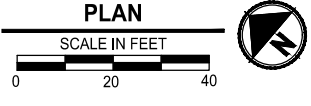
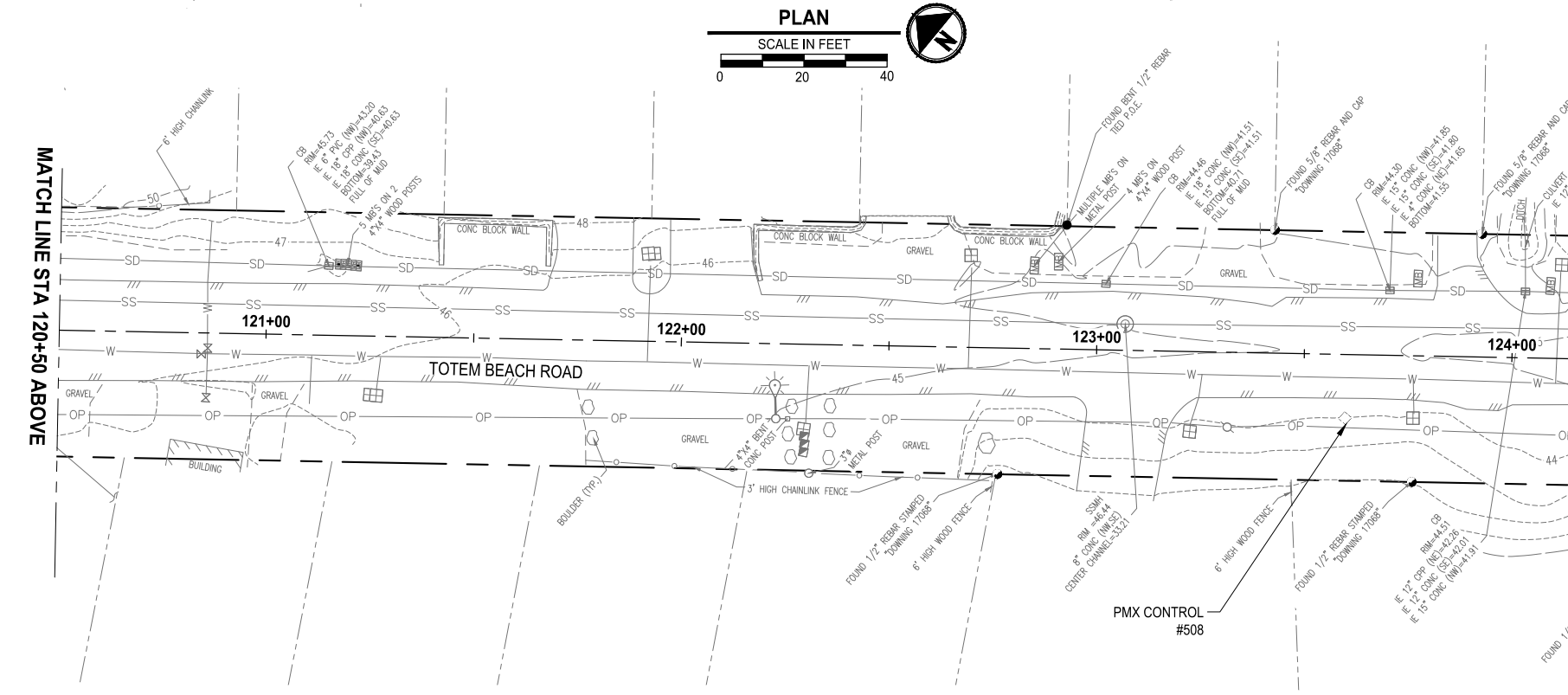
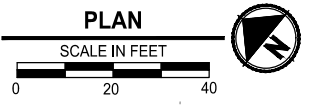
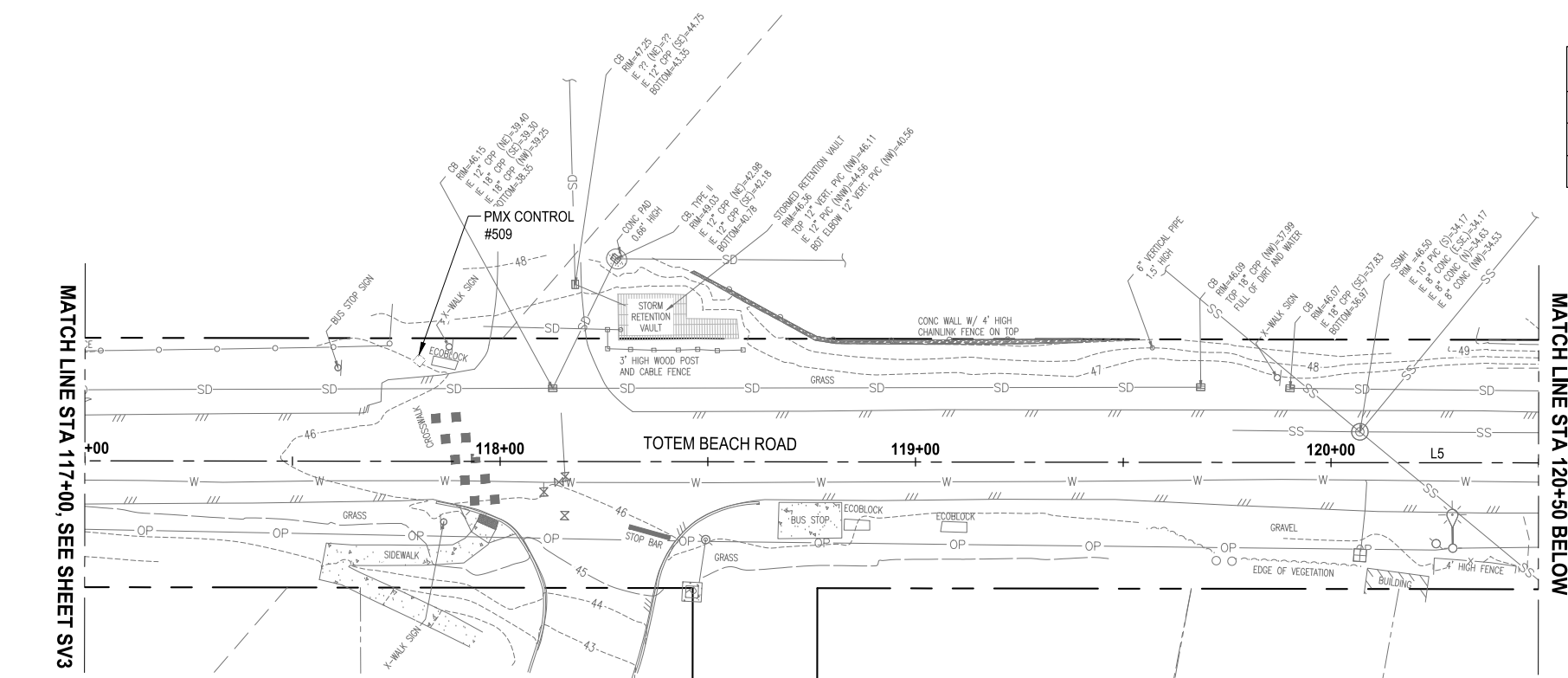
**SURVEY MAP AND
HORIZONTAL CONTROL PLAN**

DRAWING NO.
5 OF 20

SV3



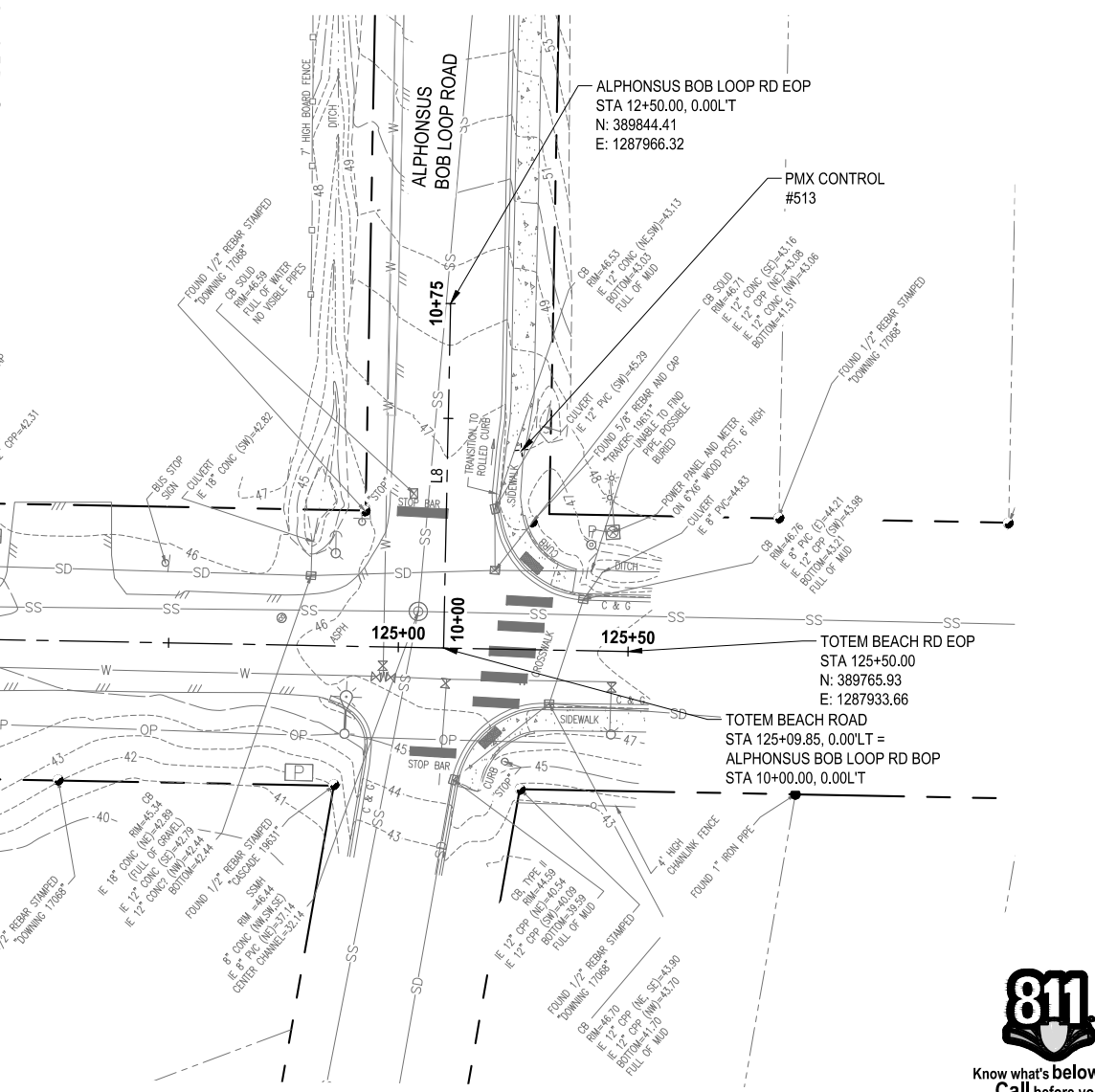
PATH: U:\PSO\Projects\Clients\1598-TulipTribes\1598-TulipTribes\CADD\DWG\TOTEM BEACH PLOTTED BY: SvalDim DATE: Tuesday, April 26, 2022 4:29:13 PM LAYOUT: SV4



LINE TABLE			
LINE ID	LENGTH	BEARING	ALIGNMENT NAME
L5	1048.71'	S39° 19' 12"E	TOTEM BEACH ROAD
L8	75.00'	N50° 46' 41"E	ALPHONSUS BOB LOOP ROAD

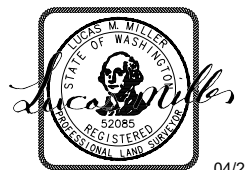
PARAMETRIX CONTROL TABLE				
POINT NO.	NORTHING	EASTING	ELEVATION	DESCRIPTION
508	389903.13	1287801.48	44.24	SET HUB & TACK 108
509	390376.58	1287464.80	45.71	SET HUB & TACK 109
513	389812.00	1287952.06	47.24	SET PK

NOTE: SEE SHEETS SV1, SV2, AND SV4 FOR ADDITIONAL CONTROL POINTS



REVISIONS	DATE	BY	DESIGNED
			D. SUSLIKOV
			D. SUSLIKOV
			A. FISHER
			H. LONGFELLOW

ONE INCH AT FULL SCALE, IF NOT, SCALE ACCORDINGLY
 FILE NAME: PU5541598140-TOTEM-SV
 JOB No: 554-1598-140
 DATE: APRIL 2022



04/26/2022

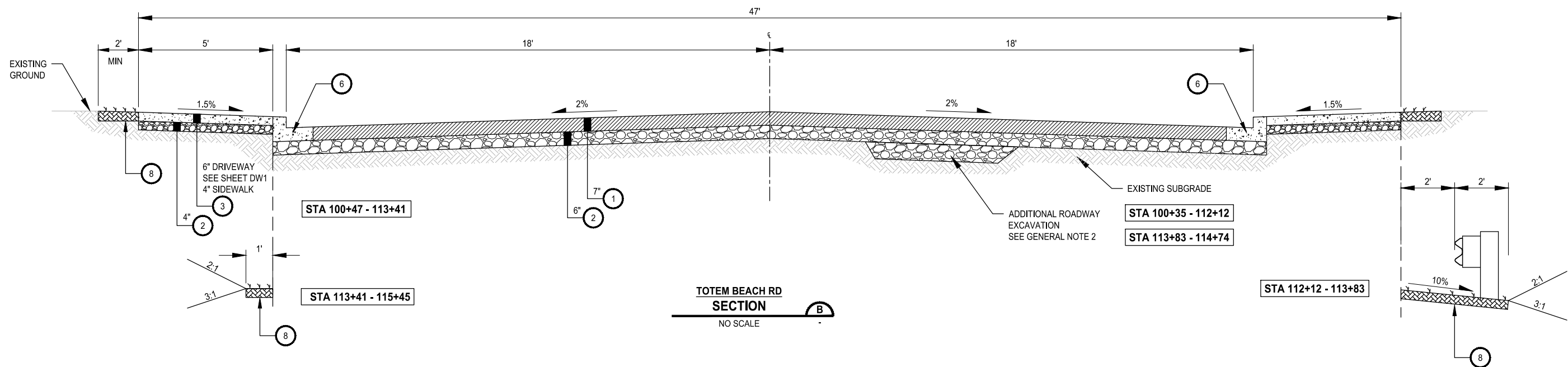
Parametrix
 ENGINEERING · PLANNING · ENVIRONMENTAL SCIENCES
 1019 39TH AVENUE SE, SUITE 100 | PUYALLUP, WA 98374
 P 253.604.6600
 WWW.PARAMETRIX.COM

PROJECT NAME
PAVEMENT REHABILITATION 2021
TOTEM BEACH RD
THE TULALIP TRIBES
 TULALIP, WASHINGTON

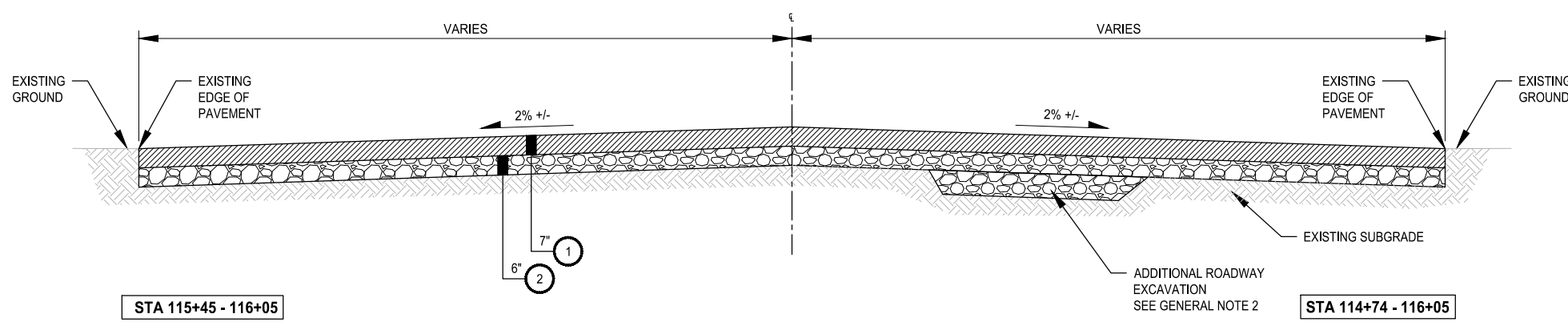
SURVEY MAP AND
HORIZONTAL CONTROL PLAN

DRAWING NO.
 6 OF 20
SV4

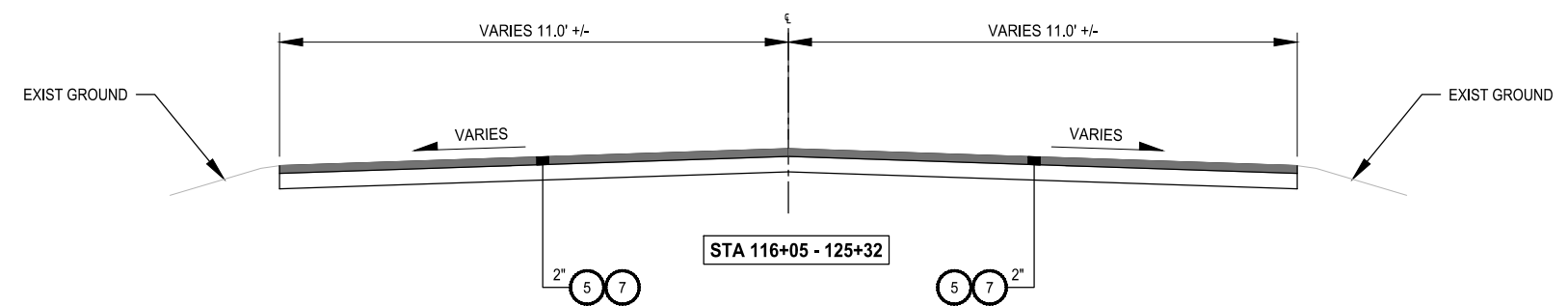
PATH: U:\PSO\Projects\Clients\1598-Tulip Tribes\1598-140-2021\m\Rehab\Projects\995\c\cadd\dwg\TOTEM_BEACH
 PLOTTED BY: SusliDm DATE: Tuesday, April 26, 2022 4:30:50 PM
 LAYOUT: RS1



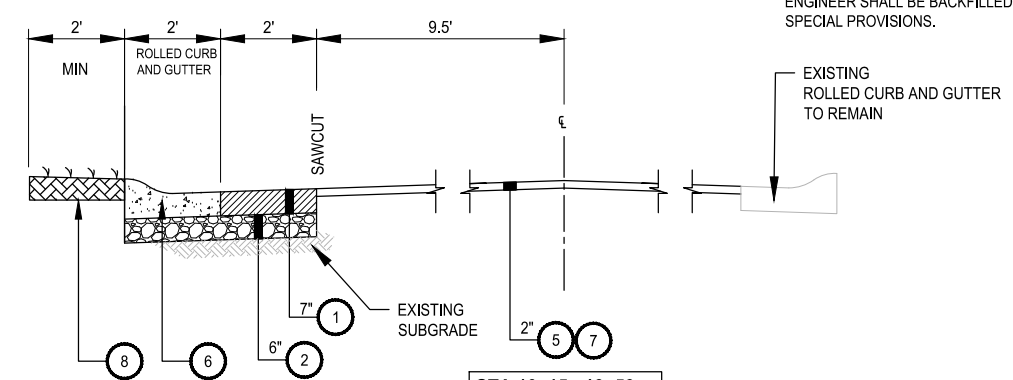
TOTEM BEACH RD SECTION B
NO SCALE



TOTEM BEACH RD SECTION B
NO SCALE



TOTEM BEACH RD SECTION C
NO SCALE



ALPHONSUS BOB LOOP RD SECTION D
NO SCALE

CONSTRUCTION NOTES:

- 1 HMA CL 1/2" PG 64-22.
- 2 CRUSHED SURFACING BASE COURSE.
- 3 CEMENT CONCRETE.
- 4 TOP SOIL TYPE A.
- 5 HMA CL 1/2" PG 64-22 OVERLAY.
- 6 CEMENT CONC. CURB AND GUTTER PER SNOHOMISH COUNTY ST PLAN 4-140.
- 7 BITUMINOUS ASPHALT PLANNING.
- 8 LANDSCAPING RESTORATION. **2 RS2**

GENERAL NOTES:

- 1. REFER TO BUTT JOINT DETAIL 4 SHEET RS2 WHEN TRANSITIONING FROM EXISTING TO NEW PAVING.
- 2. ADDITIONAL EXCAVATION AREA AS DIRECTED BY ENGINEER SHALL BE BACKFILLED WITH CSBC. SEE SPECIAL PROVISIONS.



REVISIONS	DATE	BY	DESIGNED
			D. SUSLIKOV
			DRAWN D. SUSLIKOV
			CHECKED A. FISHER
			APPROVED H. LONGFELLOW

ONE INCH AT FULL SCALE. IF NOT, SCALE ACCORDINGLY
 FILE NAME: PU5541598140-TOTEM-RS
 JOB No: 554-1598-140
 DATE: APRIL 2022



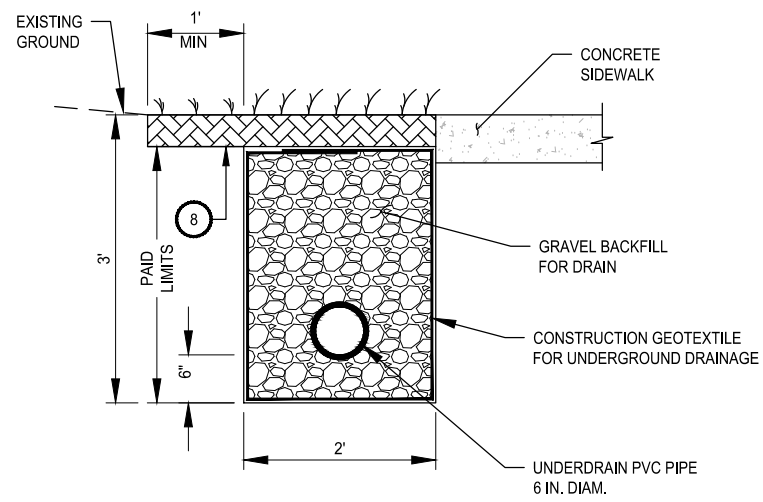
Parametrix
 ENGINEERING · PLANNING · ENVIRONMENTAL SCIENCES
 1019 39TH AVENUE SE, SUITE 100 | PUYALLUP, WA 98374
 P 253.604.6600
 WWW.PARAMETRIX.COM

PROJECT NAME
PAVEMENT REHABILITATION 2021
TOTEM BEACH RD
THE TULALIP TRIBES
 TULALIP, WASHINGTON

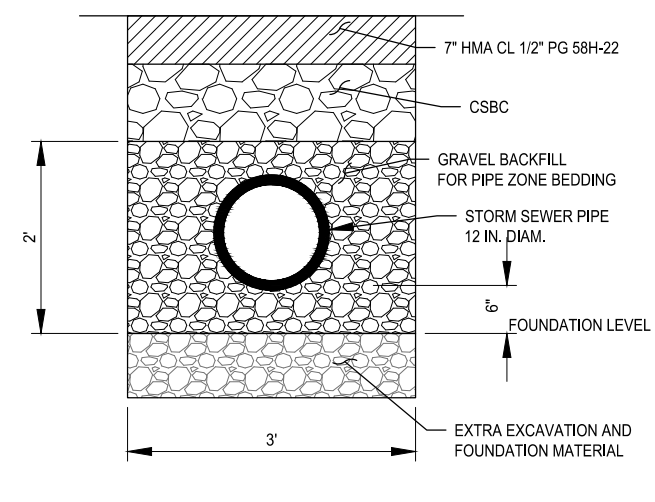
ROADWAY SECTIONS

DRAWING NO.
 7 OF 20
RS1

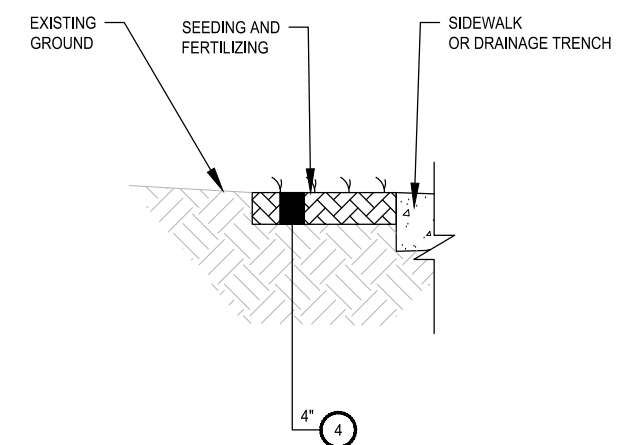
PATH: U:\PSO\Projects\Clients\1598-TulalipTribes\1598-140-2021PmtRehabProjects\995\cs\CADD\DWG\TOTEM_BEACH - PLOTTED BY: SuelDimi DATE: Tuesday, April 26, 2022 4:33:34 PM LAYOUT: RS2



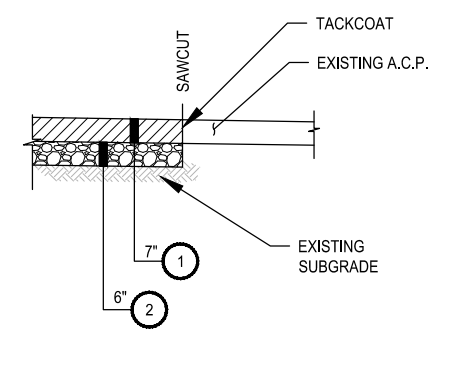
UNDERDRAIN PIPE 6 IN. DIAM. DETAIL
NO SCALE



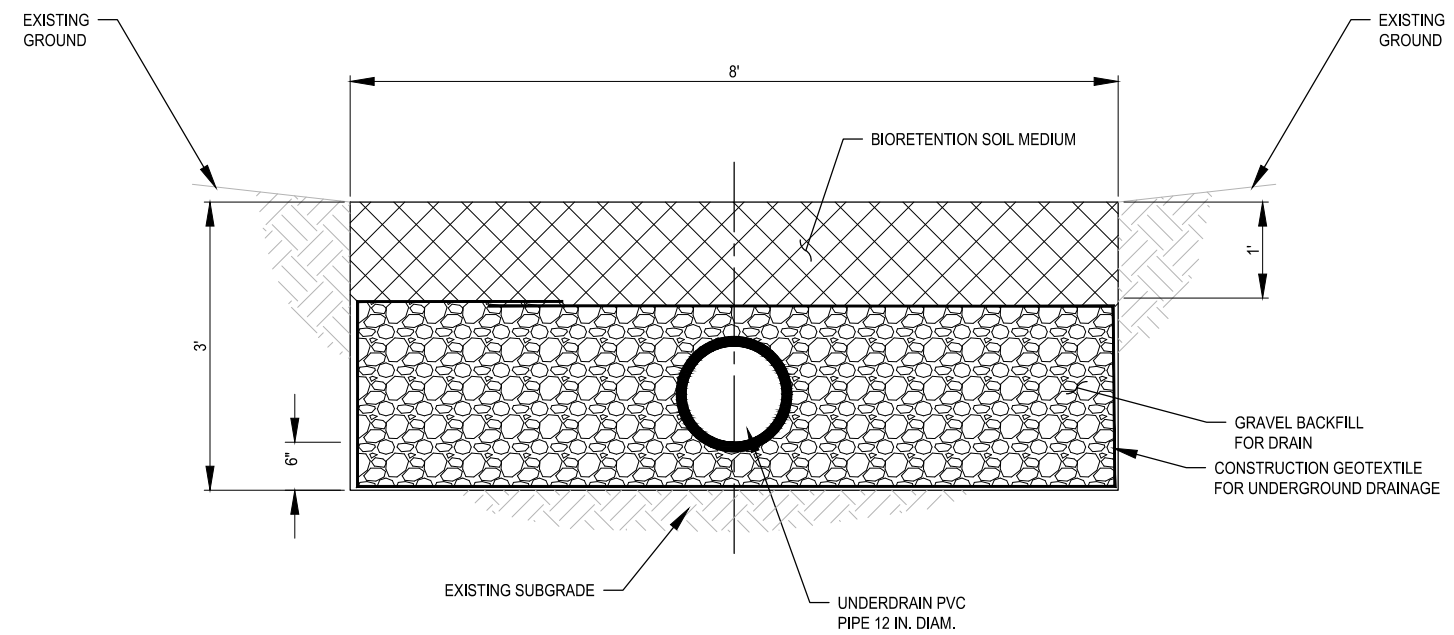
PIPE ZONE BEDDING AND BACKFILL DETAIL
NO SCALE



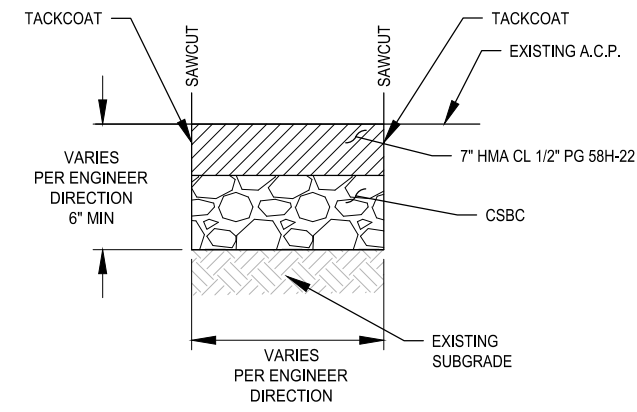
LANDSCAPING RESTORATION DETAIL
NO SCALE



BUTT JOINT DETAIL
NO SCALE



BIORETENTION SWALE DETAIL
NO SCALE



PAVEMENT REPAIR DETAIL
NO SCALE

CONSTRUCTION NOTES:

- 1 HMA CL 1/2" PG 64-22.
- 2 CRUSHED SURFACING BASE COURSE.
- 3 CEMENT CONCRETE.
- 4 TOP SOIL TYPE A.
- 5 HMA CL 1/2" PG 64-22 OVERLAY.
- 6 CEMENT CONC. CURB AND GUTTER PER SNOHOMISH COUNTY ST PLAN 4-140.
- 7 BITUMINOUS ASPHALT PLANNING.
- 8 LANDSCAPING RESTORATION.

GENERAL NOTES:

- 1. REFER TO BUTT JOINT DETAIL 4 THIS SHEET WHEN TRANSITIONING FROM EXISTING TO NEW PAVING.
- 2. ADDITIONAL EXCAVATION AREA AS DIRECTED BY ENGINEER SHALL BE BACKFILLED WITH CSBC. SEE SPECIAL PROVISIONS.



REVISIONS	DATE	BY	DESIGNED
			D. SUSLIKOV
			D. SUSLIKOV
			A. FISHER
			H. LONGFELLOW

ONE INCH AT FULL SCALE, IF NOT, SCALE ACCORDINGLY
 FILE NAME: PU5541598140-TOTEM-RS
 JOB No: 554-1598-140
 DATE: APRIL 2022



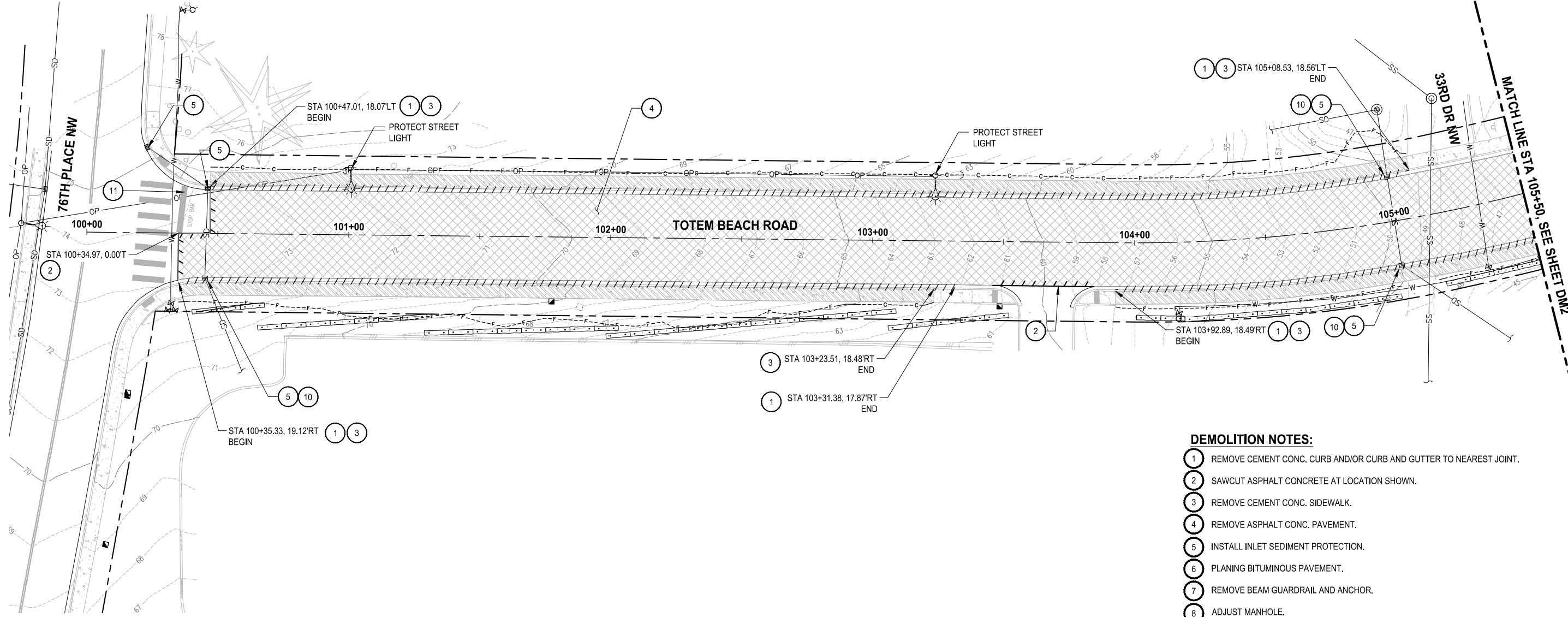
Parametrix
 ENGINEERING · PLANNING · ENVIRONMENTAL SCIENCES
 1019 39TH AVENUE SE, SUITE 100 | PUYALLUP, WA 98374
 P 253.604.6600
 WWW.PARAMETRIX.COM

PROJECT NAME
PAVEMENT REHABILITATION 2021
TOTEM BEACH RD
THE TULALIP TRIBES
 TULALIP, WASHINGTON

ROADWAY SECTIONS

DRAWING NO.
 8 OF 20
RS2

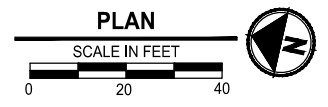
PATH: U:\PSO\Projects\Clients\1598-TulipTribes\1598-140-2021PmtRehabProjects\995\cadd\dwg\TOTEM_BEACH PLOTTED BY: SuelDimi DATE: Tuesday, April 26, 2022 4:34:20 PM LAYOUT: DM1



- DEMOLITION NOTES:**
- 1 REMOVE CEMENT CONC. CURB AND/OR CURB AND GUTTER TO NEAREST JOINT.
 - 2 SAWCUT ASPHALT CONCRETE AT LOCATION SHOWN.
 - 3 REMOVE CEMENT CONC. SIDEWALK.
 - 4 REMOVE ASPHALT CONC. PAVEMENT.
 - 5 INSTALL INLET SEDIMENT PROTECTION.
 - 6 PLANING BITUMINOUS PAVEMENT.
 - 7 REMOVE BEAM GUARDRAIL AND ANCHOR.
 - 8 ADJUST MANHOLE.
 - 9 ADJUST VALVE BOX.
 - 10 ADJUST CATCH BASIN.
 - 11 REMOVE PAINTED TRAFFIC MARKING.

- DEMO LEGEND:**
- SAWCUT LINE
 - DEMOLITION LINE
 - REMOVE ASPHALT CONCRETE PAVEMENT
 - REMOVE CEMENT CONCRETE SIDEWALK
 - PLANING BITUMINOUS PAVEMENT

- TESC LEGEND:**
- CUT CATCHLINE
 - FILL CATCHLINE
 - WATTLE



REVISIONS	DATE	BY	DESIGNED
			D. SUSLIKOV
			D. SUSLIKOV
			A. FISHER
			H. LONGFELLOW

ONE INCH AT FULL SCALE.
IF NOT, SCALE ACCORDINGLY

FILE NAME
PU5541598140-TOTEM-DM

JOB No.
554-1598-140

DATE
APRIL 2022



Parametrix
ENGINEERING · PLANNING · ENVIRONMENTAL SCIENCES

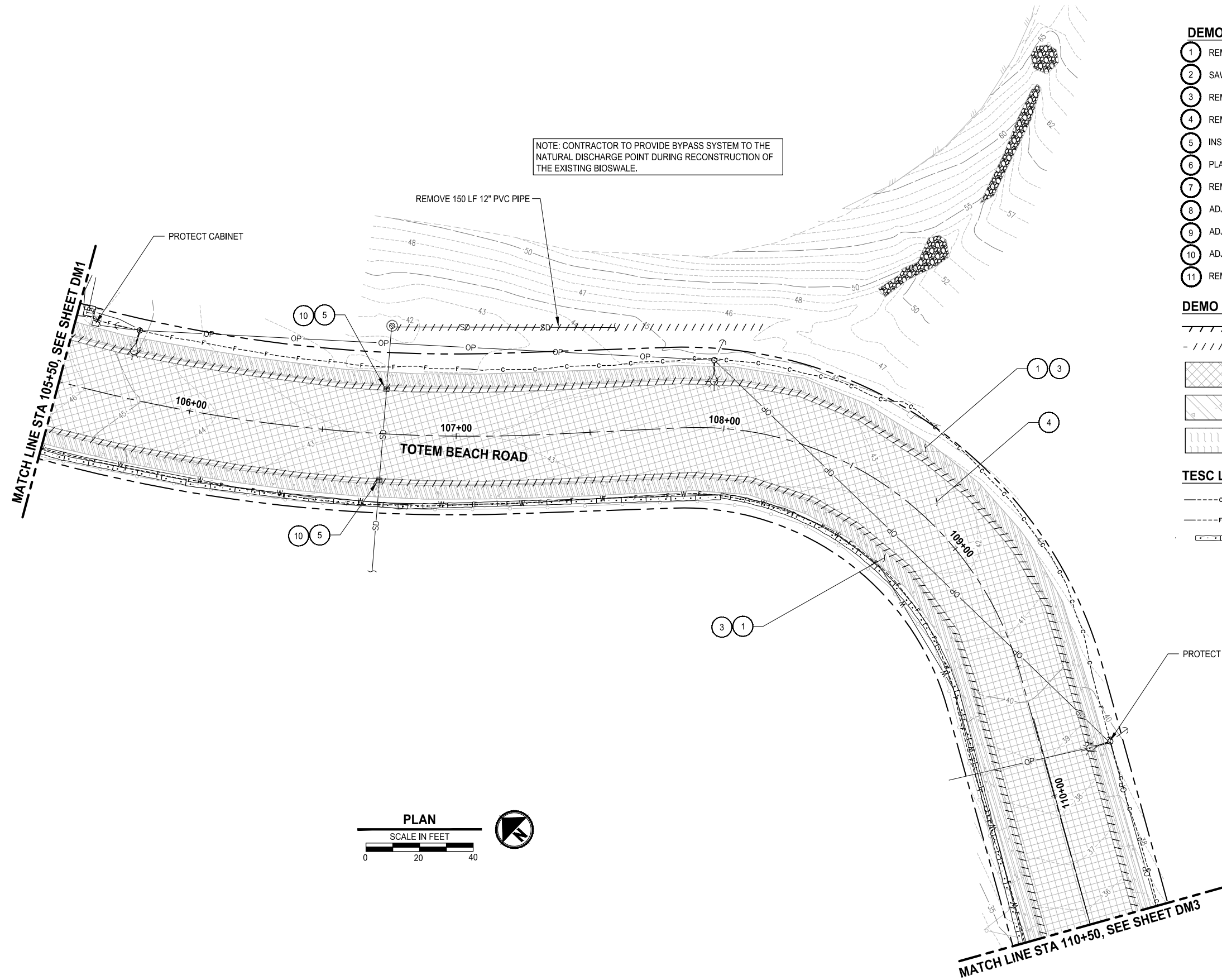
1019 39TH AVENUE SE, SUITE 100 | PUYALLUP, WA 98374
P 253.604.6600
WWW.PARAMETRIX.COM

PROJECT NAME
**PAVEMENT REHABILITATION 2021
TOTEM BEACH RD
THE TULALIP TRIBES**
TULALIP, WASHINGTON

DEMOLITION AND TESC PLAN

DRAWING NO.
9 OF 20
DM1

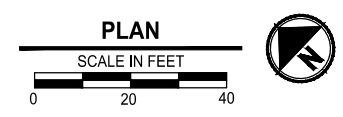
PATH: U:\PSO\Projects\Clients\1598-Tulalip Tribes\1598-140-2021PmRehabProjects\995\cadd\DWG\TOTEM BEACH
 LAYOUT: DM2
 PLOTTED BY: SuelDimi DATE: Tuesday, April 26, 2022 4:34:56 PM



- DEMOLITION NOTES:**
- 1 REMOVE CEMENT CONC. CURB AND/OR CURB AND GUTTER TO NEAREST JOINT.
 - 2 SAWCUT ASPHALT CONCRETE AT LOCATION SHOWN.
 - 3 REMOVE CEMENT CONC. SIDEWALK.
 - 4 REMOVE ASPHALT CONC. PAVEMENT.
 - 5 INSTALL INLET SEDIMENT PROTECTION.
 - 6 PLANING BITUMINOUS PAVEMENT.
 - 7 REMOVE BEAM GUARDRAIL AND ANCHOR.
 - 8 ADJUST MANHOLE.
 - 9 ADJUST VALVE BOX.
 - 10 ADJUST CATCH BASIN.
 - 11 REMOVE PAINTED TRAFFIC MARKING.

- DEMO LEGEND:**
- SAWCUT LINE
 - DEMOLITION LINE
 - REMOVE ASPHALT CONCRETE PAVEMENT
 - REMOVE CEMENT CONCRETE SIDEWALK
 - PLANING BITUMINOUS PAVEMENT

- TESC LEGEND:**
- CUT CATCHLINE
 - FILL CATCHLINE
 - WATTLE



REVISIONS	DATE	BY	DESIGNED
			D. SUSLIKOV
			DRAWN D. SUSLIKOV
			CHECKED A. FISHER
			APPROVED H. LONGFELLOW

ONE INCH AT FULL SCALE.
IF NOT, SCALE ACCORDINGLY

FILE NAME
PU5541598140-TOTEM-DM

JOB No.
554-1598-140

DATE
APRIL 2022



Parametrix
ENGINEERING · PLANNING · ENVIRONMENTAL SCIENCES

1019 39TH AVENUE SE, SUITE 100 | PUYALLUP, WA 98374
P 253.604.6600
WWW.PARAMETRIX.COM

PROJECT NAME
**PAVEMENT REHABILITATION 2021
TOTEM BEACH RD
THE TULALIP TRIBES**

TULALIP, WASHINGTON

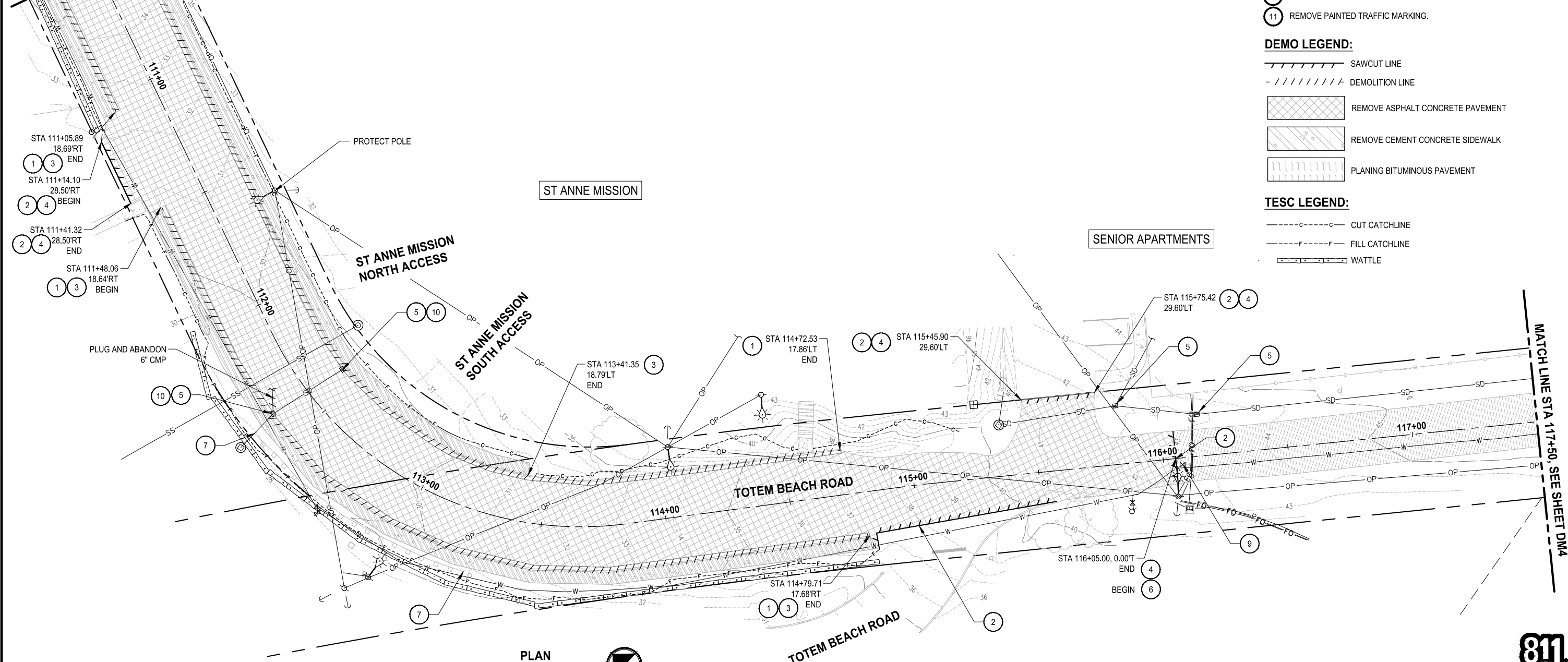
DEMOLITION AND TESC PLAN

DRAWING NO.
10 OF 20

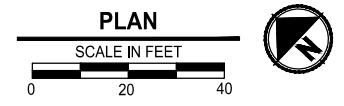
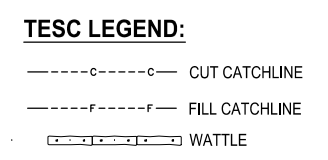
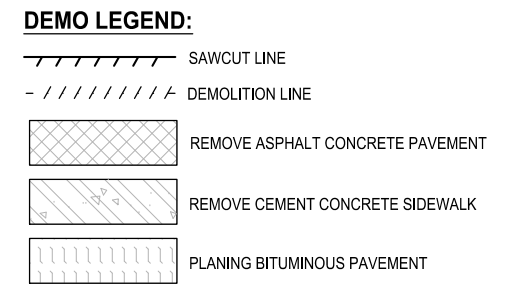
DM2

PATH: U:\PSO\Projects\Clients\1598-TulipTribes\1598-140-2021PmRehabProjects\995\cadd\DWG\TOTEM_BEACH
 LAYOUT: DM3
 PLOTTED BY: SuelDimi DATE: Tuesday, April 26, 2022 4:35:26 PM

MATCH LINE STA 110+50, SEE SHEET DM2



- DEMOLITION NOTES:**
- 1 REMOVE CEMENT CONC. CURB AND/OR CURB AND GUTTER TO NEAREST JOINT.
 - 2 SAWCUT ASPHALT CONCRETE AT LOCATION SHOWN.
 - 3 REMOVE CEMENT CONC. SIDEWALK.
 - 4 REMOVE ASPHALT CONC. PAVEMENT.
 - 5 INSTALL INLET SEDIMENT PROTECTION.
 - 6 PLANING BITUMINOUS PAVEMENT.
 - 7 REMOVE BEAM GUARDRAIL AND ANCHOR.
 - 8 ADJUST MANHOLE.
 - 9 ADJUST VALVE BOX.
 - 10 ADJUST CATCH BASIN.
 - 11 REMOVE PAINTED TRAFFIC MARKING.



REVISIONS	DATE	BY	DESIGNED
			D. SUSLIKOV
			D. SUSLIKOV
			A. FISHER
			H. LONGFELLOW

ONE INCH AT FULL SCALE.
IF NOT, SCALE ACCORDINGLY

FILE NAME
PU5541598140-TOTEM-DM

JOB No.
554-1598-140

DATE
APRIL 2022



Parametrix
ENGINEERING · PLANNING · ENVIRONMENTAL SCIENCES

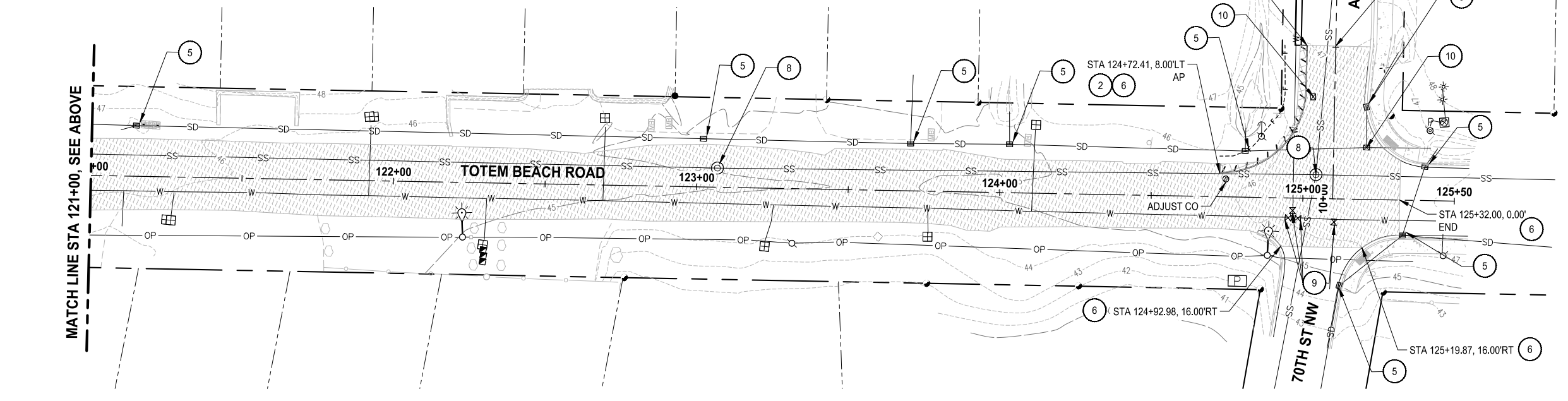
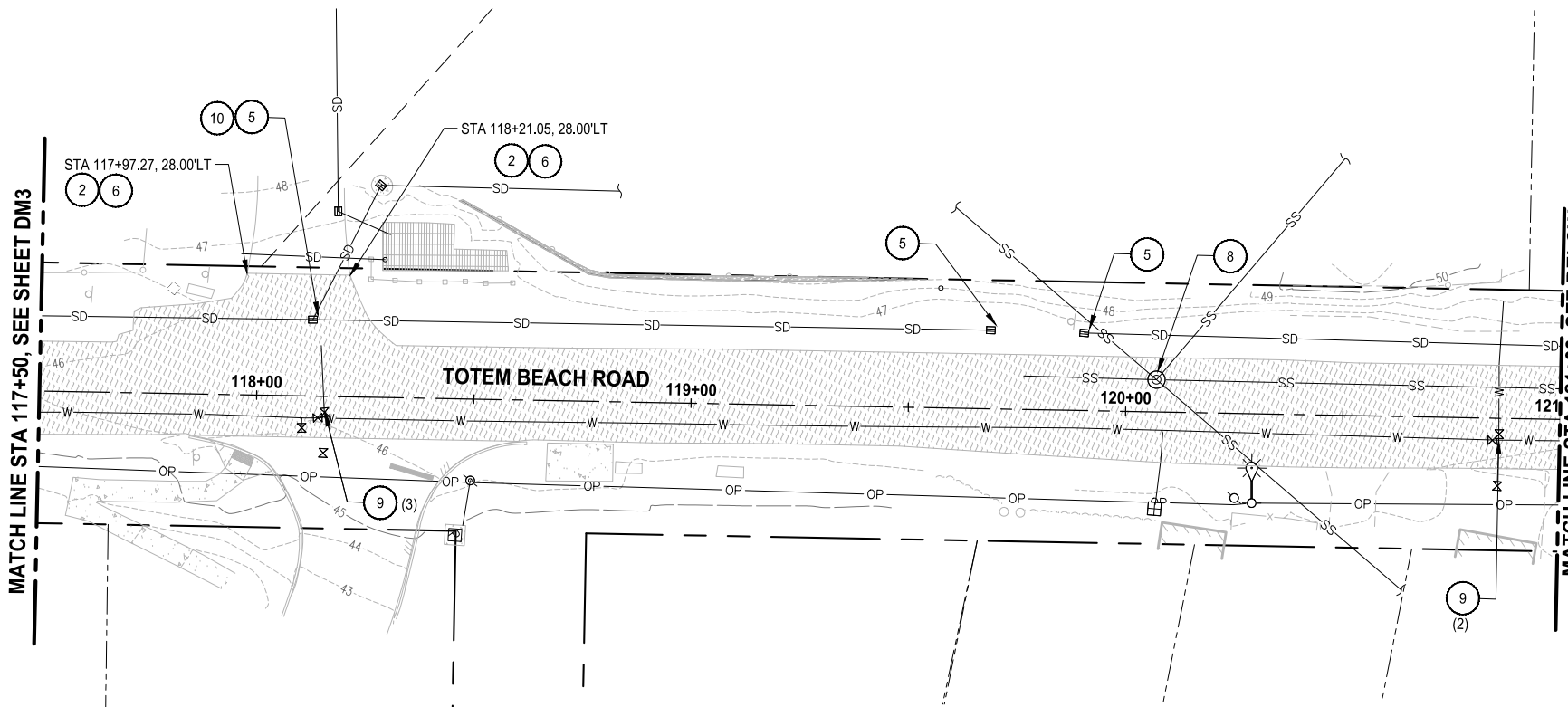
1019 39TH AVENUE SE, SUITE 100 | PUYALLUP, WA 98374
P 253.604.6600
WWW.PARAMETRIX.COM

PROJECT NAME
**PAVEMENT REHABILITATION 2021
TOTEM BEACH RD
THE TULALIP TRIBES**
TULALIP, WASHINGTON

DEMOLITION AND TESC PLAN

DRAWING NO.
11 OF 20
DM3

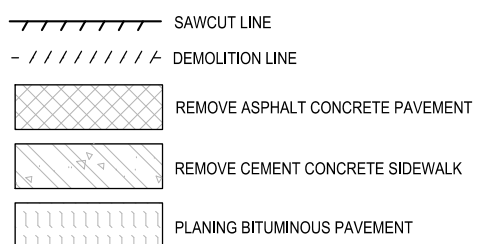
PATH: U:\PSO\Projects\Clients\1598-TulipTribes\1598-140-2021PmRehab\Projects\985\cadd\DWG\TOTEM_BEACH
 LAYOUT: DM4
 PLOTTED BY: SuelDimi DATE: Tuesday, April 26, 2022 4:36:02 PM



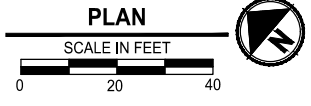
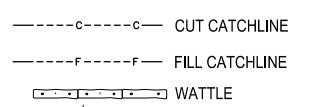
DEMOLITION NOTES:

- 1 REMOVE CEMENT CONC. CURB AND/OR CURB AND GUTTER TO NEAREST JOINT.
- 2 SAWCUT ASPHALT CONCRETE AT LOCATION SHOWN.
- 3 REMOVE CEMENT CONC. SIDEWALK.
- 4 REMOVE ASPHALT CONC. PAVEMENT.
- 5 INSTALL INLET SEDIMENT PROTECTION.
- 6 PLANING BITUMINOUS PAVEMENT.
- 7 REMOVE BEAM GUARDRAIL AND ANCHOR.
- 8 ADJUST MANHOLE.
- 9 ADJUST VALVE BOX.
- 10 ADJUST CATCH BASIN.
- 11 REMOVE PAINTED TRAFFIC MARKING.

DEMO LEGEND:



TESC LEGEND:



REVISIONS	DATE	BY	DESIGNED
			D. SUSLIKOV
			D. SUSLIKOV
			A. FISHER
			H. LONGFELLOW

ONE INCH AT FULL SCALE.
 IF NOT, SCALE ACCORDINGLY
 FILE NAME
 PU5541598140-TOTEM-DM
 JOB No.
 554-1598-140
 DATE
 APRIL 2022



Parametrix
 ENGINEERING · PLANNING · ENVIRONMENTAL SCIENCES
 1019 39TH AVENUE SE, SUITE 100 | PUYALLUP, WA 98374
 P 253.604.6600
 WWW.PARAMETRIX.COM

PROJECT NAME
PAVEMENT REHABILITATION 2021
TOTEM BEACH RD
THE TULALIP TRIBES
 TULALIP, WASHINGTON

DEMOLITION AND TESC PLAN

DRAWING NO.
 12 OF 20
DM4

GENERAL NOTES (EROSION CONTROL)

1. EROSION CONTROL MEASURES SHALL BE IN PLACE PRIOR TO THE BEGINNING OF CONSTRUCTION. THE ENGINEER AND CONTRACTOR SHALL INSPECT AND APPROVE THE INSTALLATION OF EROSION CONTROL MEASURES PRIOR TO BEGINNING CONSTRUCTION.
2. EROSION CONTROL MEASURES ARE NOT LIMITED TO THE ITEMS SHOWN ON THIS PLAN. THE CONTRACTOR SHALL BE RESPONSIBLE FOR THE INSTALLATION AND MAINTENANCE OF ALL EROSION CONTROL MEASURES. SILTATION OF EXISTING OR PROPOSED DRAINAGE FACILITIES SHALL NOT BE ALLOWED. CARE SHALL BE TAKEN TO PREVENT MITIGATION OF SILTS TO OFF SITE PROPERTIES.
3. THE CONTRACTOR SHALL MAKE DAILY SURVEILLANCE OF ALL EROSION CONTROL MEASURES AND MAKE ANY NECESSARY REPAIRS OR ADDITIONS TO THE EROSION CONTROL MEASURES AS REQUIRED. THE CONTRACTOR SHALL PROVIDE ADDITIONAL EROSION CONTROL MEASURES AS DETERMINED BY THE INSPECTOR OR ENGINEER. FAILURE TO COMPLY WITH ALL TRIBAL EROSION CONTROL REQUIREMENTS MAY RESULT IN CIVIL PENALTIES BEING LEVIED AGAINST THE CONTRACTOR.
4. DURING THE WET SEASON, NOVEMBER TO MARCH INCLUSIVE, ALL DISTURBED SOILS SHALL BE STABILIZED WITHIN 48 HOURS AFTER STOP OF WORK. EROSION CONTROL MEASURES SHALL INCLUDE, BUT ARE NOT LIMITED TO, COVERING THE AFFECTED AREA INCLUDING SPOIL PILES WITH PLASTIC SHEETING, STRAW MATTING, JUTE MATTING, STRAW MULCH, OR WOOD CHIPS. SEEDING OF THE DISTURBED AREAS SHALL TAKE PLACE AS WEATHER PERMITS.
5. ALL SEEDED OR SODDED AREAS SHALL BE CHECKED REGULARLY TO ENSURE VEGETATIVE COVERAGE IS COMPLETE. AREAS SHALL BE REPAIRED, RESEEDED, AND FERTILIZED AS REQUIRED.
6. TRACKING OF SOIL OFF SITE WILL NOT BE ALLOWED. IF SOIL IS TRACKED ON TO A PUBLIC STREET, IT SHALL BE REMOVED BY THE END OF THAT WORKING DAY. ANY FURTHER TRACKING OF MUD SHALL THEN BE PREVENTED BY SWEEPING OR WASHING OF THE VEHICLE'S TIRES BEFORE DRIVING ON A STREET.
7. NO MORE THAN 300 LF OF TRENCH SHALL BE OPENED AT ONE TIME.
8. EXCAVATED MATERIAL SHALL BE PLACED ON THE UPHILL SIDE OF TRENCHES.
9. TRENCH DEWATERING DEVICES SHALL BE DISCHARGED IN A MANNER THAT WILL NOT ADVERSELY AFFECT FLOWING STREAMS, DRAINAGE SYSTEMS, OR OFF SITE PROPERTIES.
10. ALL STORM SEWER INLETS RECEIVING RUNOFF FROM THE PROJECT DURING CONSTRUCTION SHALL BE PROTECTED SO THAT SEDIMENT-LADEN WATER WILL BE FILTERED BEFORE ENTERING THE CONVEYANCE SYSTEM.
11. ALL OFF SITE CATCH BASINS IMMEDIATELY ADJACENT TO THE SITE SHALL BE PROTECTED FROM SILTATION.
12. ALL DISTURBED AREAS SHALL BE SEEDED OR SODDED UPON COMPLETION OF WORK. THE CONTRACTOR SHALL BE RESPONSIBLE TO ENSURE THAT COMPLETE COVERAGE OF THE DISTURBED AREAS IS PROVIDED AND THAT GROWTH OF VEGETATION IS ESTABLISHED FOR 3 MONTHS.

SILT FENCES:

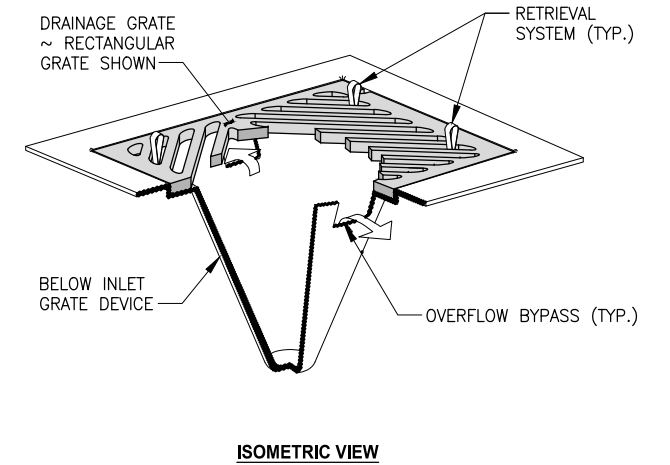
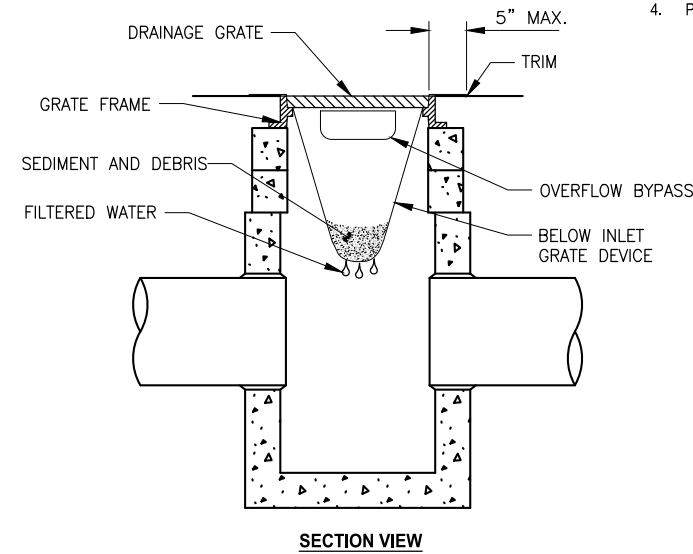
1. SILT FENCE SHALL BE PURCHASED IN A CONTINUOUS ROLL CUT TO THE LENGTH OF THE BARRIER TO AVOID USE OF JOINTS. WHEN JOINTS ARE NECESSARY, FILTER CLOTH SHALL BE SPLICED TOGETHER ONLY AT A SUPPORT POST, WITH A MINIMUM 6-INCH OVERLAP, AND SECURELY FASTENED AT BOTH ENDS TO POST.
2. POSTS SHALL BE SPACED A MAXIMUM OF 6 FEET APART AND DRIVEN SECURELY INTO THE GROUND (MINIMUM OF 12 INCHES).
3. A TRENCH SHALL BE EXCAVATED APPROXIMATELY 4 INCHES WIDE AND 4 INCHES DEEP ALONG THE LINE OF POSTS AND UPSLOPE FROM THE BARRIER.
4. WHEN STANDARD STRENGTH FILTER FABRIC IS USED, A WIRE MESH SUPPORT FENCE SHALL BE FASTENED SECURELY TO THE UPSLOPE SIDE OF THE POSTS USING HEAVY-DUTY WIRE STAPLES AT LEAST 1 INCH LONG. THE WIRES OR HOG RINGS. THE WIRE SHALL EXTEND INTO THE TRENCH A MINIMUM OF 4 INCHES AND SHALL NOT EXTEND MORE THAN 36 INCHES ABOVE THE ORIGINAL GROUND SURFACE.
5. THE STANDARD STRENGTH SILT FENCE SHALL BE STAPLED OR WIRED TO THE FENCE, AND 20 INCHES OF THE SILT FENCE SHALL BE EXTENDED INTO THE TRENCH. THE FABRIC SHALL NOT EXTEND MORE THAN 36 INCHES ABOVE THE ORIGINAL GROUND SURFACE. SILT FENCE SHALL NOT BE STAPLED TO EXISTING TREES.
6. WHEN EXTRA-STRENGTH SILT FENCE AND CLOSER POST SPACING IS USED, THE WIRE MESH SUPPORT FENCE MAY BE ELIMINATED. IN SUCH A CASE, THE SILT FENCE IS STAPLED OR WIRED DIRECTLY TO THE POSTS WITH ALL OTHER PROVISIONS OF ABOVE NOTES APPLYING.
7. SILT FENCES SHALL NOT BE REMOVED BEFORE THE UPSLOPE AREA HAS BEEN PERMANENTLY STABILIZED.
8. SILT FENCES SHALL BE INSPECTED IMMEDIATELY AFTER EACH RAINFALL AND AT LEAST DAILY DURING PROLONGED RAINFALL. ANY REQUIRED REPAIRS SHALL BE MADE IMMEDIATELY.

INLET SEDIMENT PROTECTION

1. CATCH BASIN INSERT INSTALLATION:
2. REMOVE CATCH BASIN GRATE
3. CLEAN DIRT AND DEBRIS FROM GRATE LEDGE
4. PLACE INSERT OVER CATCH BASIN OPENING WITH BAG INSIDE BASIN
5. REPLACE GRATE, AT THE SAME TIME PINCH INSERT FABRIC BETWEEN GRATE AND CATCH BASIN FRAME
6. CUT EXCESS FABRIC OFF AND LEAVE THREE TO FIVE INCHES OF FABRIC AROUND OUTSIDE SIDE OF GRATE IF INSERT IS REUSABLE

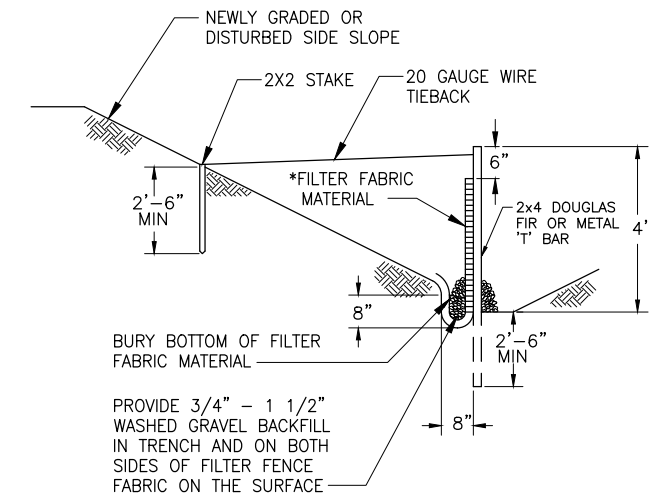
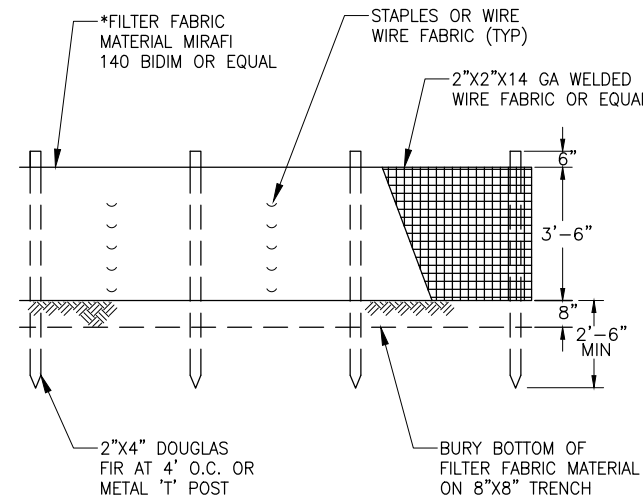
NOTES:

1. SIZE THE BELOW INLET GRATE DEVICE FOR THE STORM WATER STRUCTURE IT WILL SERVICE.
2. THE INSERT SHALL HAVE A BUILT-IN HIGH-FLOW RELIEF SYSTEM (OVERFLOW BYPASS).
3. THE RETRIEVAL SYSTEM MUST ALLOW REMOVAL OF THE INSERT WITHOUT SPILLING THE COLLECTED MATERIAL.
4. PERFORM MAINTENANCE IN ACCORDANCE WITH STANDARD SPECIFICATION 8-01.3(15).



INLET SEDIMENT PROTECTION

NO SCALE



ELEVATION

TYPICAL CROSS SECTION

NOTES:

1. SILT FENCE SHALL BE INSTALLED ON CONTOUR OTHER INSTALLATIONS ARE NOT ACCEPTABLE.
2. *FILTER FABRIC TO BE SPECIFIED BY ENGINEER.

SILT FENCE



Know what's below.
Call before you dig.

PATH: U:\PSO\Projects\Clients\TulalipTribes\1598-TulalipTribes\554-140-2021PmRehabProjects\9855\CA00\DWG\TOTEM_BEACH.dwg PLOTTED BY: SuelDim DATE: Tuesday, April 26, 2022 4:36:32 PM LAYOUT: DM5

REVISIONS	DATE	BY	DESIGNED
			D. SUSLIKOV
			DRAWN D. SUSLIKOV
			CHECKED A. FISHER
			APPROVED H. LONGFELLOW

ONE INCH AT FULL SCALE. IF NOT, SCALE ACCORDINGLY

FILE NAME
PU5541598140-TOTEM-DM

JOB No.
554-1598-140

DATE
APRIL 2022



Parametrix
ENGINEERING · PLANNING · ENVIRONMENTAL SCIENCES

1019 39TH AVENUE SE, SUITE 100 | PUYALLUP, WA 98374
P 253.604.6600
WWW.PARAMETRIX.COM

PROJECT NAME
**PAVEMENT REHABILITATION 2021
TOTEM BEACH RD
THE TULALIP TRIBES**

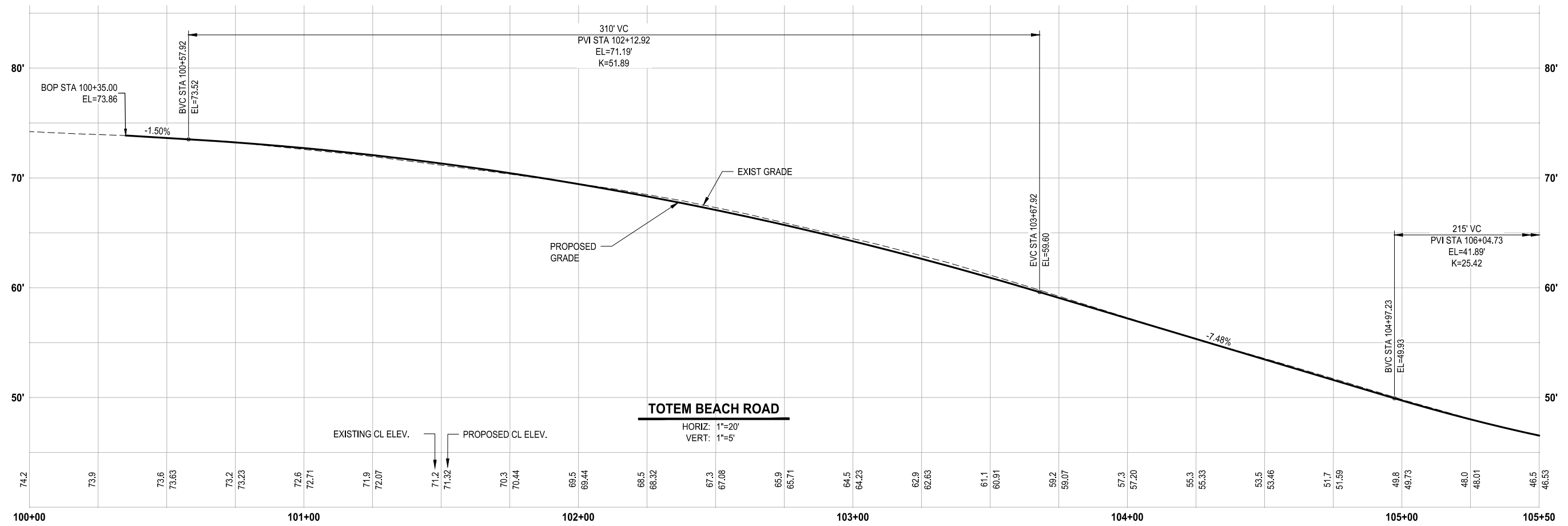
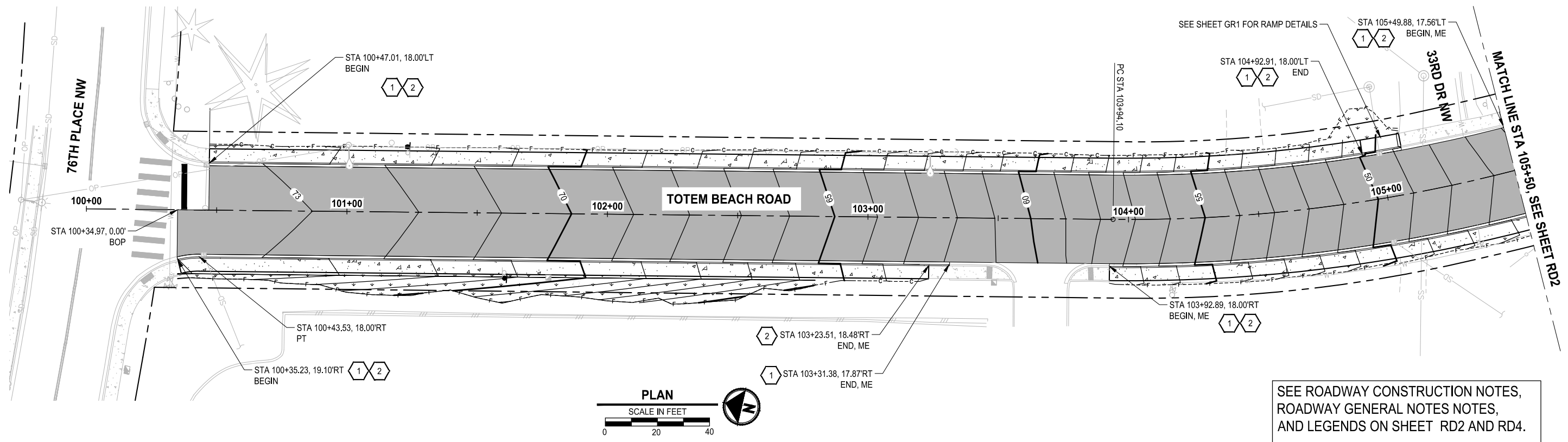
TULALIP, WASHINGTON

**DEMOLITION AND TESC
NOTES AND DETAILS**

DRAWING NO.
13 OF 20

DM5

PATH: U:\PSO\Projects\Clients\1598-Tulip Tribes\1598-140-2021\Plan\Rehab\Projects\995\Drawings\TOTEM_BEACH - PLOTTED BY: SvalDimi DATE: Tuesday, April 26, 2022 4:38:09 PM LAYOUT: RD1



REVISIONS	DATE	BY	DESIGNED
			D. SUSLIKOV
			D. SUSLIKOV
			A. FISHER
			H. LONGFELLOW

ONE INCH AT FULL SCALE, IF NOT, SCALE ACCORDINGLY

FILE NAME: PU5541598140-TOTEM-RD
 JOB No: 554-1598-140
 DATE: APRIL 2022



Parametrix
ENGINEERING · PLANNING · ENVIRONMENTAL SCIENCES

1019 39TH AVENUE SE, SUITE 100 | PUYALLUP, WA 98374
 P 253.604.6600
 WWW.PARAMETRIX.COM

PROJECT NAME
PAVEMENT REHABILITATION 2021
TOTEM BEACH RD
THE TULALIP TRIBES
 TULALIP, WASHINGTON

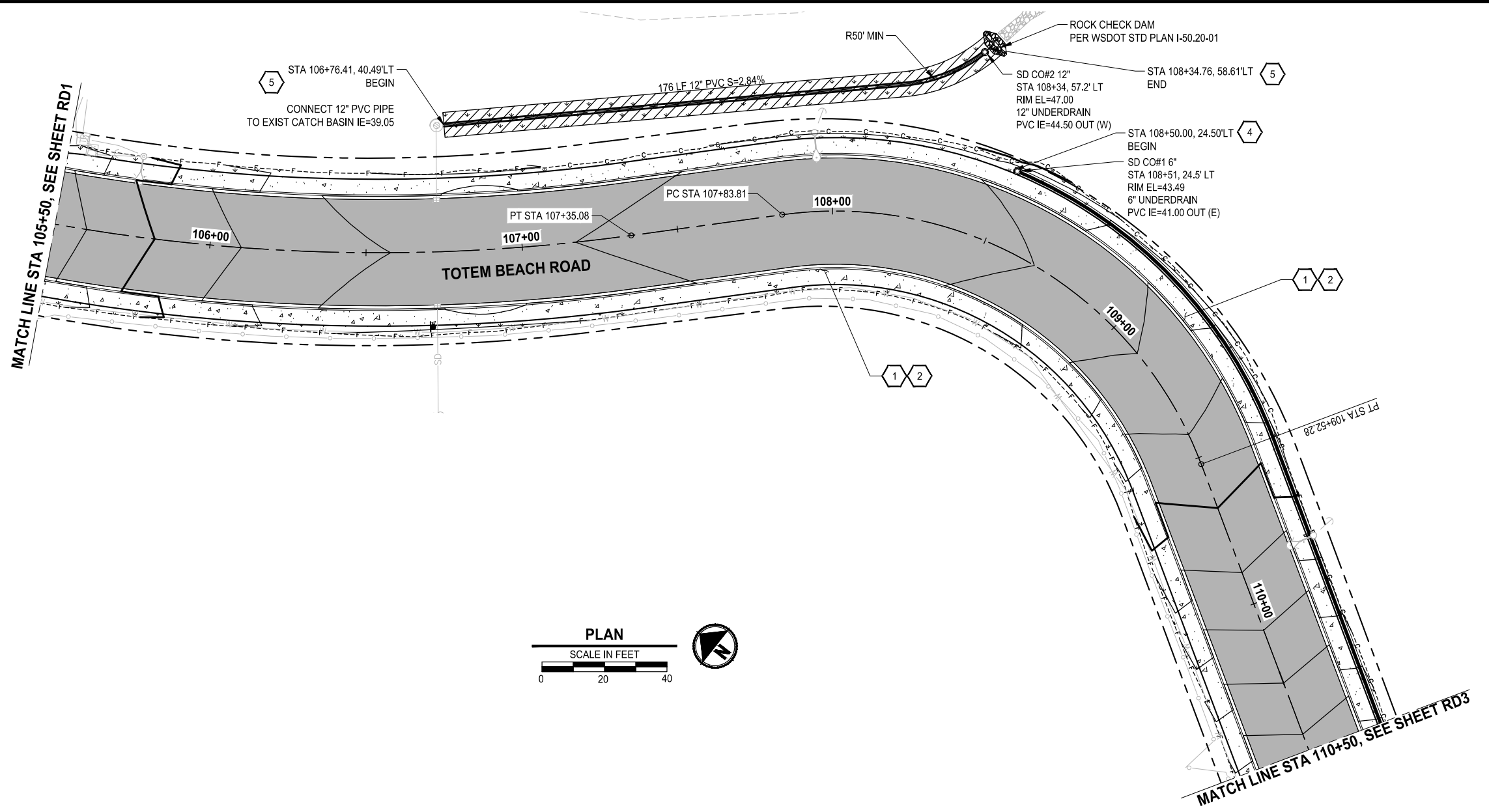
ROADWAY AND STORMWATER
PLAN & PROFILE

DRAWING NO.
14 OF 20

RD1



PATH: U:\PSO\Projects\Clients\1598-TulalipTribes\1598-140-2021PmtRehabProjects\995\cadd\dwg\TOTEM_BEACH
 LAYOUT: RD2
 PLOTTED BY: SuelDimi DATE: Tuesday, April 26, 2022 4:39:02 PM

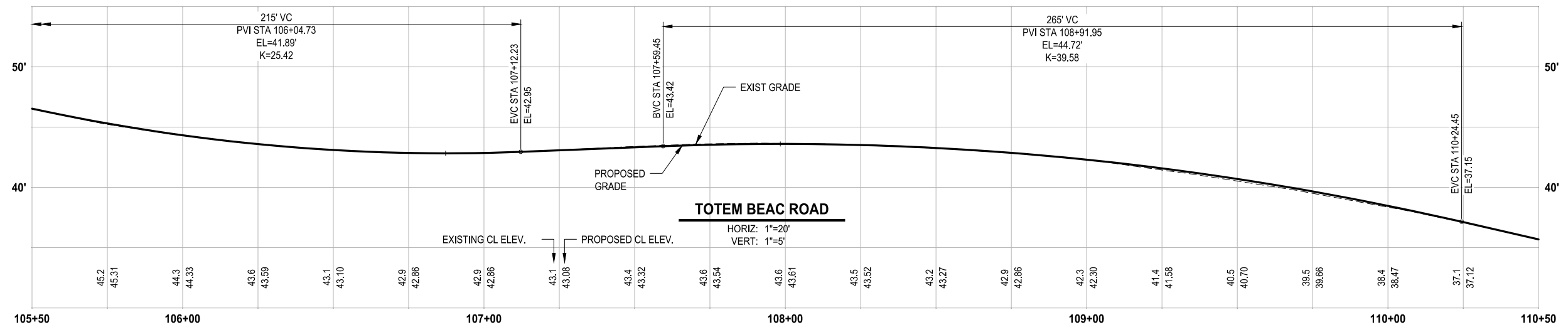
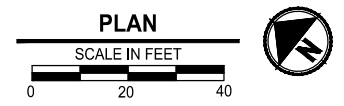


- ROADWAY CONSTRUCTION NOTES:**
- 1 CONSTRUCT CEMENT CONC TRAFFIC CURB AND GUTTER PER SNOHOMISH CO STD PLAN 4-140.
 - 2 CONSTRUCT CEMENT CONC SIDEWALK PER SNOHOMISH CO STD PLAN 4-150.
 - 3 INSTALL CATCH BASIN TYPE 1 PER WSDOT STD. PLAN B-5.20-03.
 - 4 UNDERDRAIN PIPE 6 IN. DIAM. SEE (1) RS2
 - 5 BIORETATION SWALE. SEE (5) RS2
 - 6 BEAM GUARDRAIL TYPE 31 PER WSDOT ST PLAN C-20.10-07.
 - 7 BEAM GUARDRAIL ANCHOR TYPE 10 PER WSDOT ST PLAN C-23.60-04.
 - 8 ROLLED CURB AND GUTTER PER SNOHOMISH CO STD PLAN 4-140.

- ROADWAY GENERAL NOTES:**
1. CONTRACTOR SHALL FURNISH AND INSTALL ALL MATERIALS AND EQUIPMENT NECESSARY TO COMPLETE THIS WORK.
 2. TYPICAL ROAD SECTIONS ARE ON SHEET RS1.
 3. CONTRACTOR SHALL CREATE SMOOTH TRANSITIONS WHEN MATCHING PROPOSED AND EXISTING CURBS.
 4. CURB AND GUTTER OFFSETS MEASURED TO FLOW LINES.

LEGEND

	HMA PAVING
	CEMENT CONC. SIDEWALK
	CEMENT CONC. DRIVEWAY ENTRANCE
	HMA OVERLAY
	LANDSCAPING RESTORATION
	BIORETENTION SWALE RESTORATION



REVISIONS	DATE	BY	DESIGNED
			D. SUSLIKOV
			DRAWN
			D. SUSLIKOV
			CHECKED
			A. FISHER
			APPROVED
			H. LONGFELLOW

ONE INCH AT FULL SCALE, IF NOT, SCALE ACCORDINGLY
 FILE NAME: PU5541598140-TOTEM-RD
 JOB No: 554-1598-140
 DATE: APRIL 2022



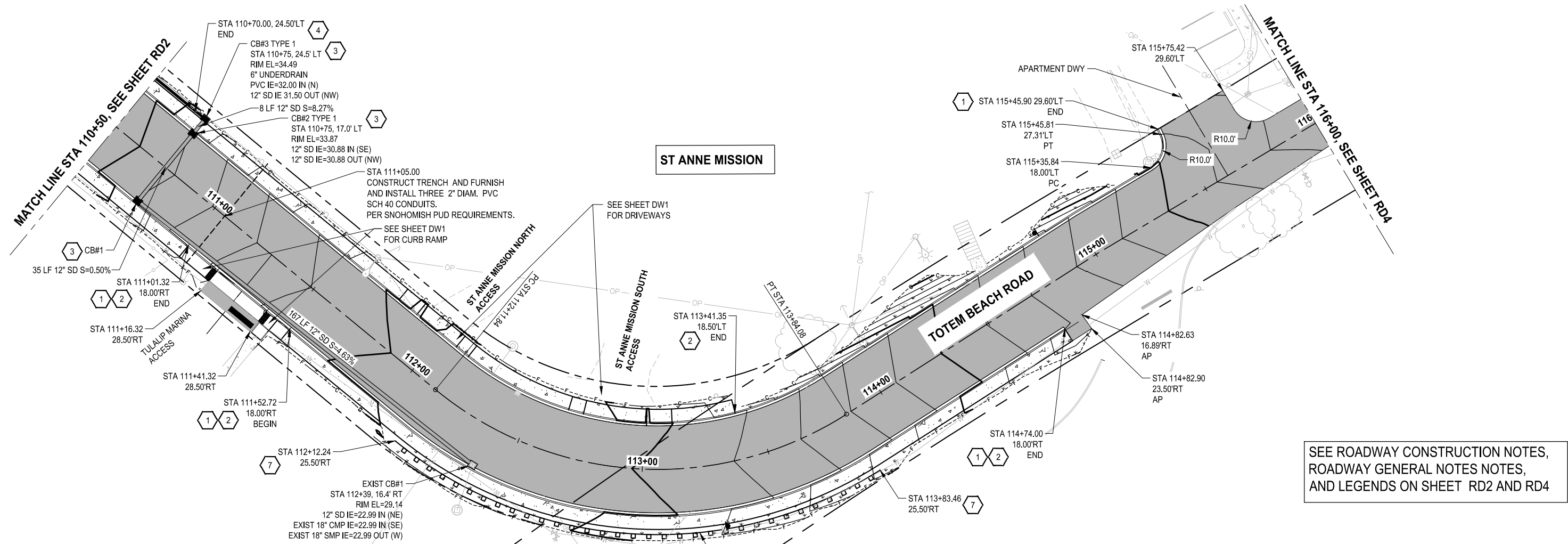
Parametrix
 ENGINEERING · PLANNING · ENVIRONMENTAL SCIENCES
 1019 39TH AVENUE SE, SUITE 100 | PUYALLUP, WA 98374
 P 253.604.6600
 WWW.PARAMETRIX.COM

PROJECT NAME
PAVEMENT REHABILITATION 2021
TOTEM BEACH RD
THE TULALIP TRIBES
 TULALIP, WASHINGTON

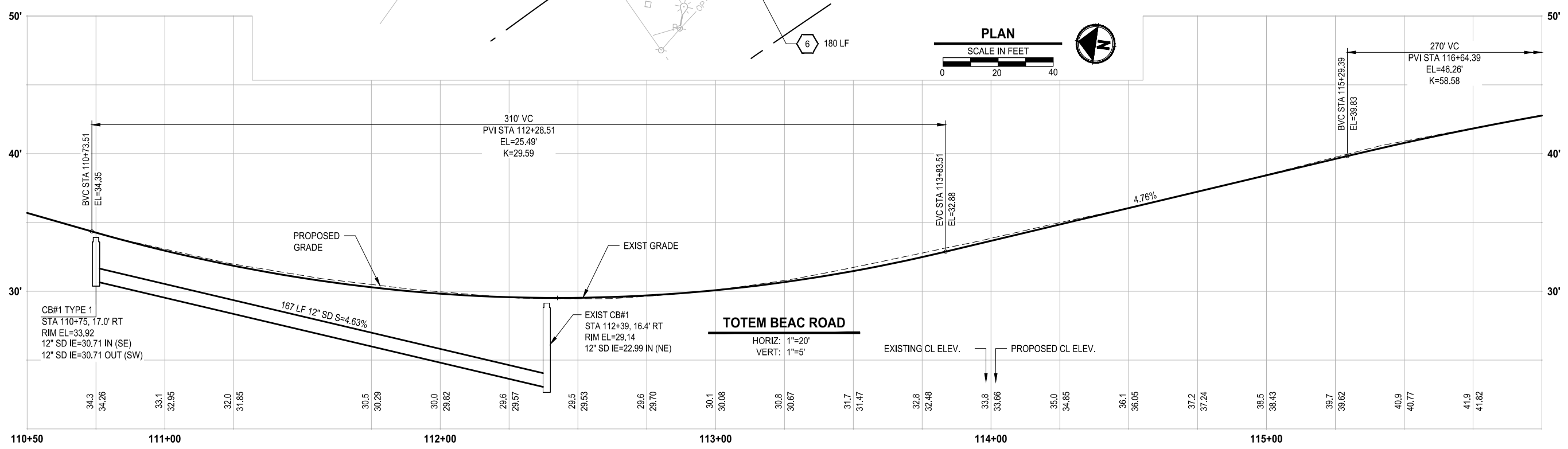
ROADWAY AND STORMWATER
PLAN & PROFILE

DRAWING NO.
 15 OF 20
RD2

PATH: U:\PSO\Projects\Clients\1598-Tulalip Tribes\1598-140-2021PmtRehab\Projects\995\cadd\dwg\TOTEM BEACH
 PLOTTED BY: SuelDimi DATE: Tuesday, April 26, 2022 4:39:50 PM
 LAYOUT: RD3



SEE ROADWAY CONSTRUCTION NOTES,
ROADWAY GENERAL NOTES NOTES,
AND LEGENDS ON SHEET RD2 AND RD4



REVISIONS	DATE	BY	DESIGNED
			D. SUSLIKOV
			D. SUSLIKOV
			A. FISHER
			H. LONGFELLOW

ONE INCH AT FULL SCALE,
IF NOT, SCALE ACCORDINGLY

FILE NAME
PU5541598140-TOTEM-RD

JOB No.
554-1598-140

DATE
APRIL 2022



Parametrix
ENGINEERING · PLANNING · ENVIRONMENTAL SCIENCES

1019 39TH AVENUE SE, SUITE 100 | PUYALLUP, WA 98374
P 253.604.6600
WWW.PARAMETRIX.COM

PROJECT NAME
**PAVEMENT REHABILITATION 2021
TOTEM BEACH RD
THE TULALIP TRIBES**

TULALIP, WASHINGTON

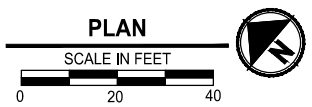
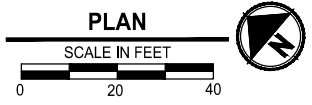
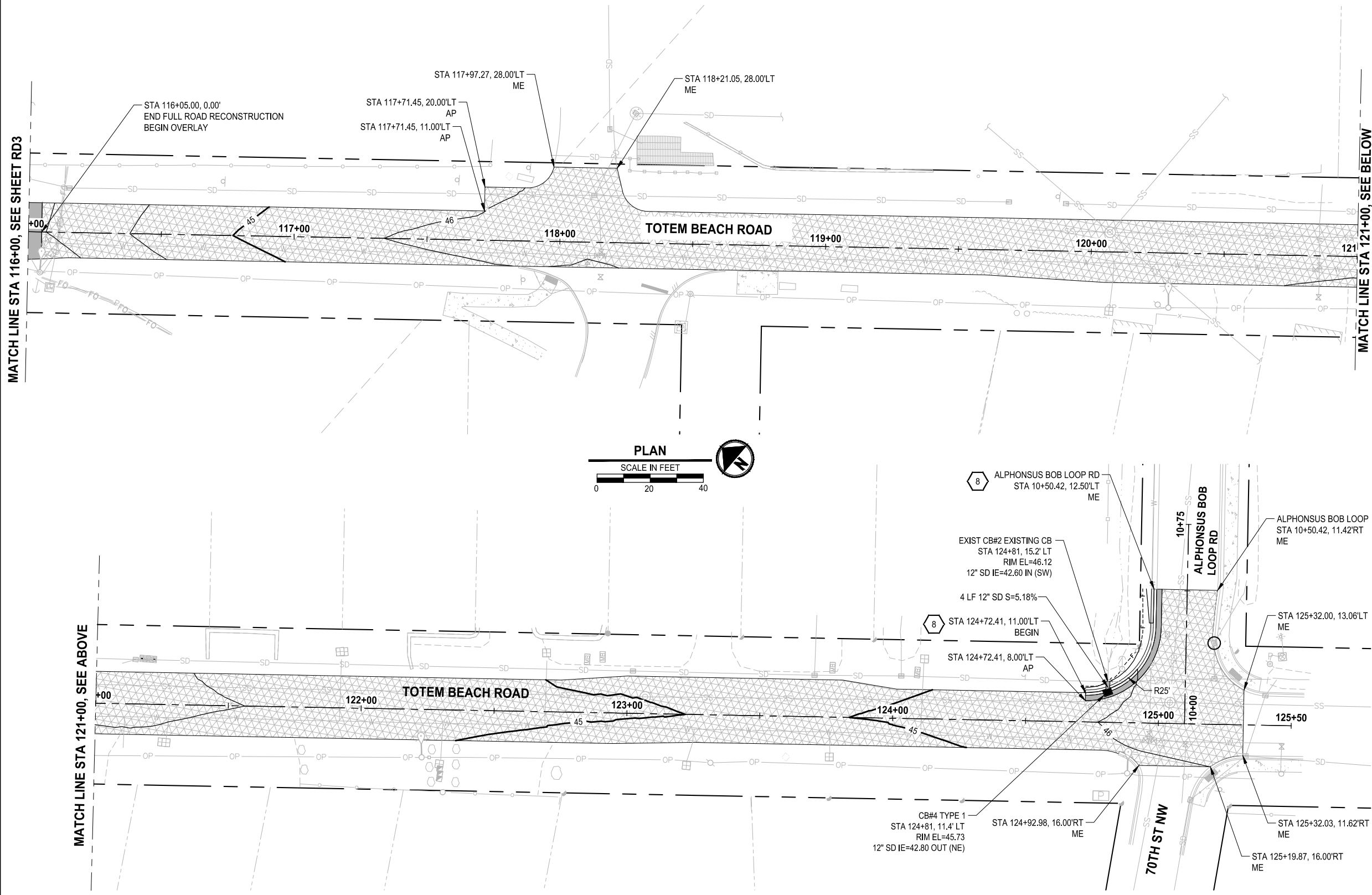
**ROADWAY AND STORMWATER
PLAN & PROFILE**

DRAWING NO.
16 OF 20

RD3



PATH: U:\PSO\Projects\Clients\1598-TulipTribes\1598-140-2021PmtRehabProjects\995\cadd\dwg\TOTEM_BEACH LAYOUT: RD4 PLOTTED BY: SuelDimi DATE: Tuesday, April 26, 2022 4:40:31 PM



ROADWAY CONSTRUCTION NOTES:

- 1 CONSTRUCT CEMENT CONC TRAFFIC CURB AND GUTTER PER SNOHOMISH CO STD PLAN 4-140.
- 2 CONSTRUCT CEMENT CONC SIDEWALK PER SNOHOMISH CO STD PLAN 4-150.
- 3 INSTALL CATCH BASIN TYPE 1 PER WSDOT STD. PLAN B-5.20-03.
- 4 UNDERDRAIN PIPE 6 IN. DIAM. SEE 1
RS2
- 5 BIORETENTION SWALE. SEE 5
RS2
- 6 BEAM GUARDRAIL TYPE 31 PER WSDOT ST PLAN C-20.10-07.
- 7 BEAM GUARDRAIL ANCHOR TYPE 10 PER WSDOT ST PLAN C-23.60-04.
- 8 ROLLED CURB AND GUTTER PER SNOHOMISH CO STD PLAN 4-140.

ROADWAY GENERAL NOTES:

- 1. CONTRACTOR SHALL FURNISH AND INSTALL ALL MATERIALS AND EQUIPMENT NECESSARY TO COMPLETE THIS WORK.
- 2. TYPICAL ROAD SECTIONS ARE ON SHEET RS1.
- 3. CONTRACTOR SHALL CREATE SMOOTH TRANSITIONS WHEN MATCHING PROPOSED AND EXISTING CURBS.
- 4. CURB AND GUTTER OFFSETS MEASURED TO FLOW LINES.

LEGEND

- HMA PAVING
- CEMENT CONC. SIDEWALK
- CEMENT CONC. DRIVEWAY ENTRANCE
- HMA OVERLAY
- LANDSCAPING RESTORATION
- BIORETENTION SWALE RESTORATION

MATCH LINE STA 121+00, SEE ABOVE

MATCH LINE STA 121+00, SEE BELOW



REVISIONS	DATE	BY	DESIGNED
			D. SUSLIKOV
			D. SUSLIKOV
			A. FISHER
			H. LONGFELLOW

ONE INCH AT FULL SCALE. IF NOT, SCALE ACCORDINGLY
 FILE NAME: PU5541598140-TOTEM-RD
 JOB No: 554-1598-140
 DATE: APRIL 2022



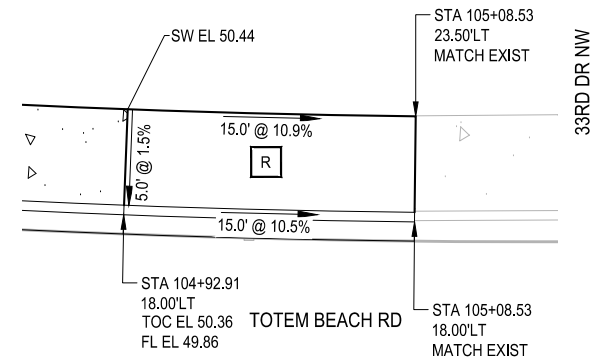
Parametrix
 ENGINEERING · PLANNING · ENVIRONMENTAL SCIENCES
 1019 39TH AVENUE SE, SUITE 100 | PUYALLUP, WA 98374
 P 253.604.6600
 WWW.PARAMETRIX.COM

PROJECT NAME
PAVEMENT REHABILITATION 2021
TOTEM BEACH RD
THE TULALIP TRIBES
 TULALIP, WASHINGTON

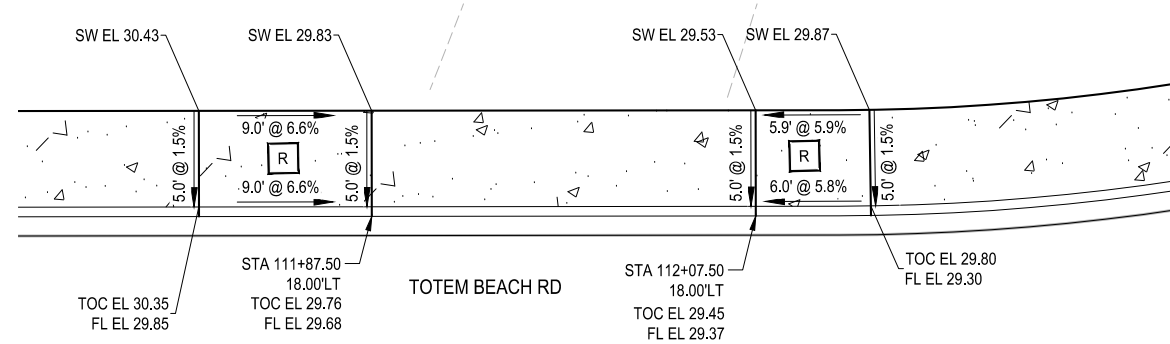
ROADWAY AND STORMWATER
PLAN & PROFILE

DRAWING NO.
 17 OF 20
RD4

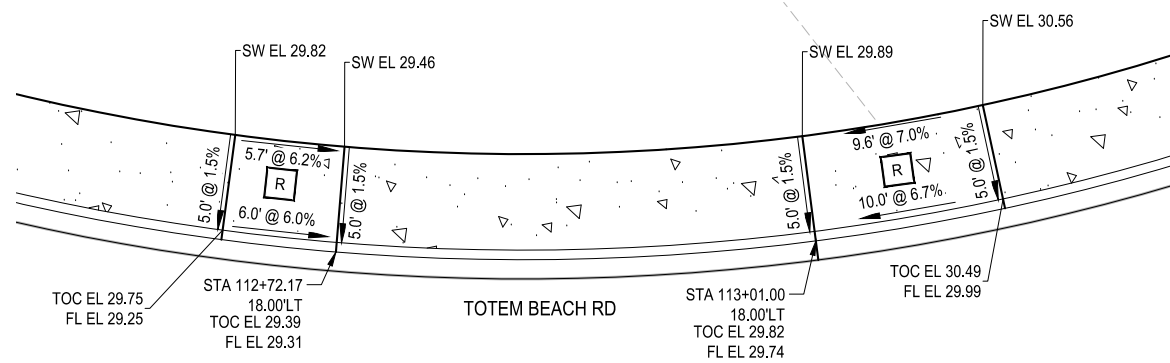
LAYOUT: DW1
 PATH: U:\PSO\Projects\Clients\1598-Tulalip Tribes\1598-140-2021PmtRehabProjects\CADD\DWG\TOTEM BEACH
 PLOTTED BY: SuelDimi DATE: Tuesday, April 26, 2022 4:42:11 PM



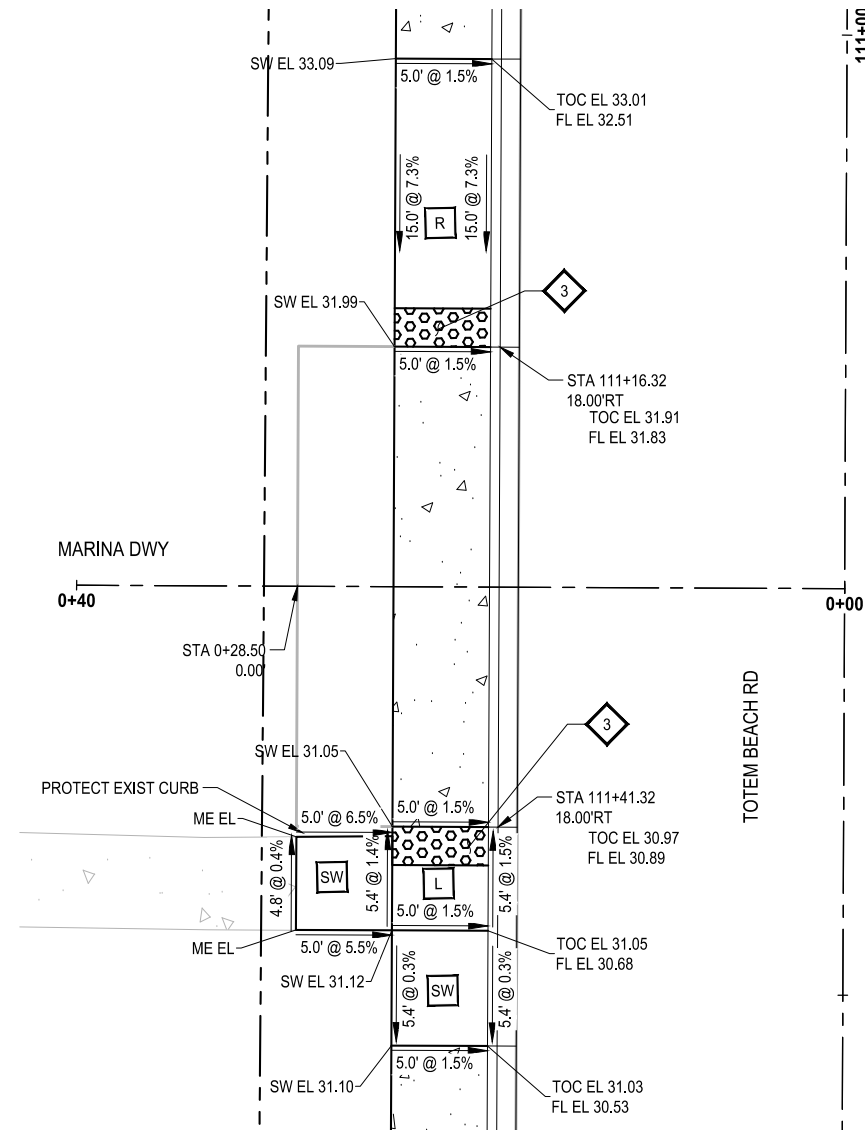
33RD DR NW DRIVEWAY PLAN
SCALE IN FEET



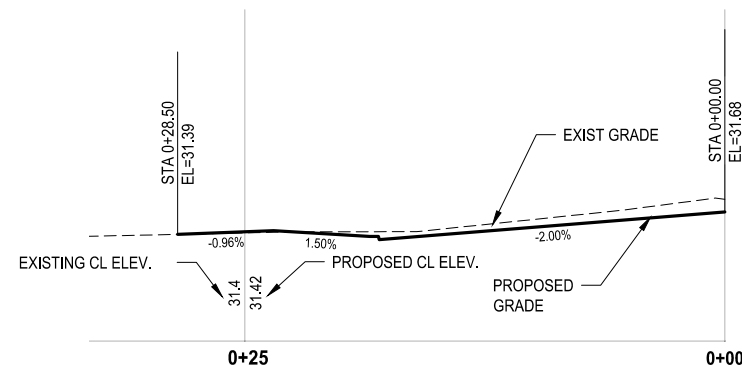
ST ANNE MISSION NORTH ACCESS PLAN
SCALE IN FEET



ST ANNE MISSION SOUTH ACCESS PLAN
SCALE IN FEET



MARINA DWY PLAN
SCALE IN FEET



MARINA DWY
HORIZ: 1"=5'
VERT: 1"=1.25'

GENERAL NOTES:

- ELEVATIONS AS SHOWN ARE BASED ON SURVEY DATA. CONTRACTOR SHALL FIELD ADJUST RAMP AND SIDEWALK ELEVATIONS AS NECESSARY TO MEET STANDARD PLAN SLOPE REQUIREMENTS IF FIELD ELEVATIONS DO NOT MATCH THOSE SHOWN ON PLANS.
- RADIUS AND OFFSET CALLOUTS ARE TO FACE OF CURB.
- RAMP GRADING POINTS REPRESENT ONE METHOD OF MEETING REFERENCED STANDARD PLANS. IT IS THE RESPONSIBILITY OF THE CONTRACTOR TO MAKE FIELD ADJUSTMENTS AS NECESSARY TO ENSURE RAMP MEET ALL ADA REQUIREMENTS.
- CONTRACTOR SHALL PROVIDE SURVEY STAKING TO THE LEVEL OF SURVEY ACCURACY NECESSARY TO SUPPORT THE CONSTRUCTION OF SIDEWALK, CURBS, CURB RAMP AND RELATED PROJECT ELEMENTS. TRADITIONAL SURVEY AND STAKING METHODS SHALL BE SUPPLEMENTED IN THE FIELD BY THE CONTRACTOR THROUGH THE USE OF A CONTRACTOR-SUPPLIED, CALIBRATED, 4-FOOT-LONG "SMART" LEVEL TO DIGITALLY MEASURE SLOPES.

GRADING NOTES:

EACH SIDEWALK AND DRIVEWAY RAMP ELEMENT SHALL MEET APPLICABLE CROSS SLOPE, RUNNING SLOPE, AND MINIMUM DIMENSIONS NOTED IN REFERENCED STANDARD PLAN. ELEMENTS NOTED ON PLANS ARE FOR REFERENCE ONLY.

ADA ELEMENT:

- R RAMP
- L LANDING
- SW SIDEWALK TRANSITION PANEL
- MF MAXIMUM EXTENT FEASIBLE

LEGEND:

- EL - ELEVATION
- FL - FLOWLINE
- OFF - OFFSET
- SW - SIDEWALK
- TOC - TOP OF CURB
- ME - MATCH EXISTING ELEVATION

CONSTRUCTION NOTES:

- 1 CONSTRUCT CEMENT CONC. DRIVEWAY ENTRANCE TYPE 1 PER WSDOT STD PLAN F-80.10.04.
- 2 CONSTRUCT CEMENT CONCRETE TRAFFIC CURB AND GUTTER PER SNOHOMISH CO STD PLAN 4-140.
- 3 INSTALL DETECTABLE WARNING SURFACE PER WSDOT STD PLAN F-45.10-03



Know what's below.
Call before you dig.

REVISIONS	DATE	BY	DESIGNED
			D. SUSLIKOV
			D. SUSLIKOV
			A. FISHER
			H. LONGFELLOW

ONE INCH AT FULL SCALE.
IF NOT, SCALE ACCORDINGLY

FILE NAME: PU5541598140-TOTEM-DW
 JOB No.: 554-1598-140
 DATE: APRIL 2022



4/26/22

Parametrix
ENGINEERING · PLANNING · ENVIRONMENTAL SCIENCES

1019 39TH AVENUE SE, SUITE 100 | PUYALLUP, WA 98374
 P 253.604.6600
 WWW.PARAMETRIX.COM

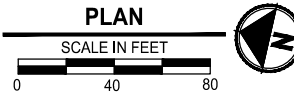
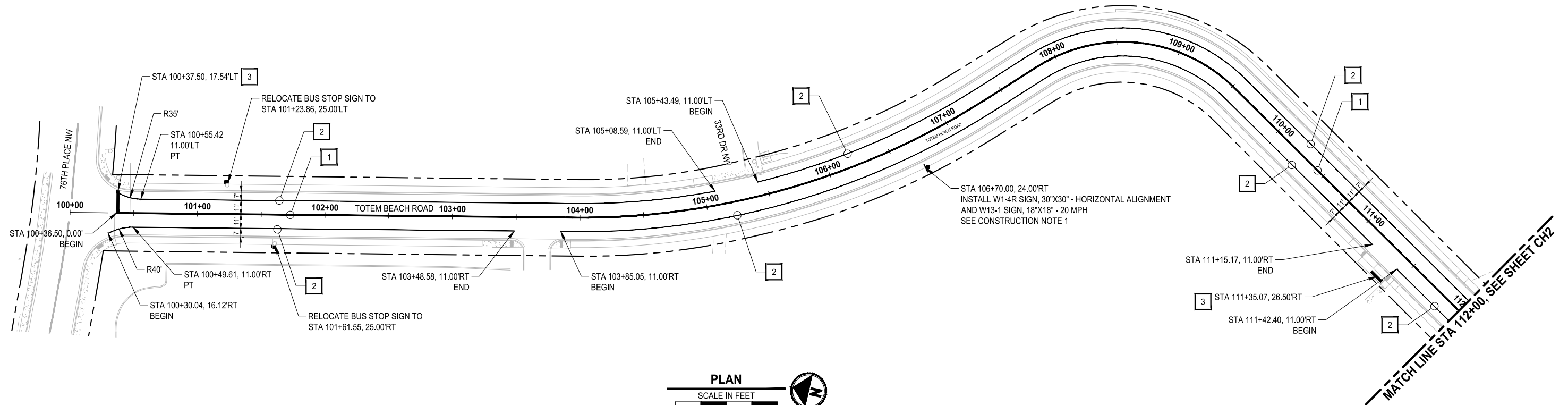
PROJECT NAME
PAVEMENT REHABILITATION 2021
TOTEM BEACH RD
THE TULALIP TRIBES
 TULALIP, WASHINGTON

DRIVEWAY SHEET

DRAWING NO.
18 OF 20

DW1

PATH: U:\PSO\Projects\Clients\1598-TulipTribes\1598-140-2021PmtRehabProjects\995\cadd\dwg\TOTEM_BEACH_PLOTTED BY: SvalDimi DATE: Tuesday, April 26, 2022 4:43:31 PM LAYOUT: CH1



CHANNELIZATION NOTES:

- 1 PAINT DOUBLE YELLOW CENTERLINE PER WSDOT STD PLAN M-20.10-03.
- 2 PAINT WHITE EDGE LINE PER WSDOT STD PLAN M-20.10-03.
- 3 INSTALL PLASTIC STOP LINE PER WSDOT STD PLAN M-24.60-04.
- 4 INSTALL PLASTIC STANDARD 10 FT CROSSWALK PER SNOHOMISH CO STD PLAN 7-110.
- 5 INSTALL PLASTIC TRIPLE FOURS CROSSWALK PER SNOHOMISH CO STD PLAN 7-110.

CONSTRUCTION NOTES:

- 1. INSTALL SIGN POSTS PER SNOHOMISH CO STD PLAN 7-180A.



Know what's below.
Call before you dig.

REVISIONS	DATE	BY	DESIGNED
			D. SUSLIKOV
			DRAWN D. SUSLIKOV
			CHECKED A. FISHER
			APPROVED H. LONGFELLOW

ONE INCH AT FULL SCALE.
IF NOT, SCALE ACCORDINGLY

FILE NAME
PU5541598140-TOTEM-CH

JOB No.
554-1598-140

DATE
APRIL 2022



Parametrix
ENGINEERING · PLANNING · ENVIRONMENTAL SCIENCES

1019 39TH AVENUE SE, SUITE 100 | PUYALLUP, WA 98374
P 253.604.6600
WWW.PARAMETRIX.COM

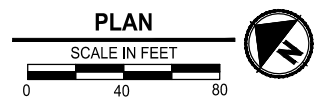
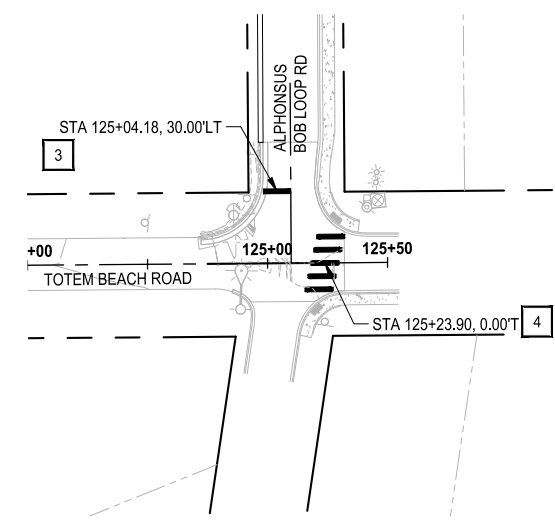
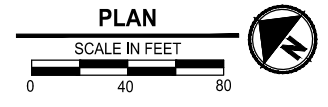
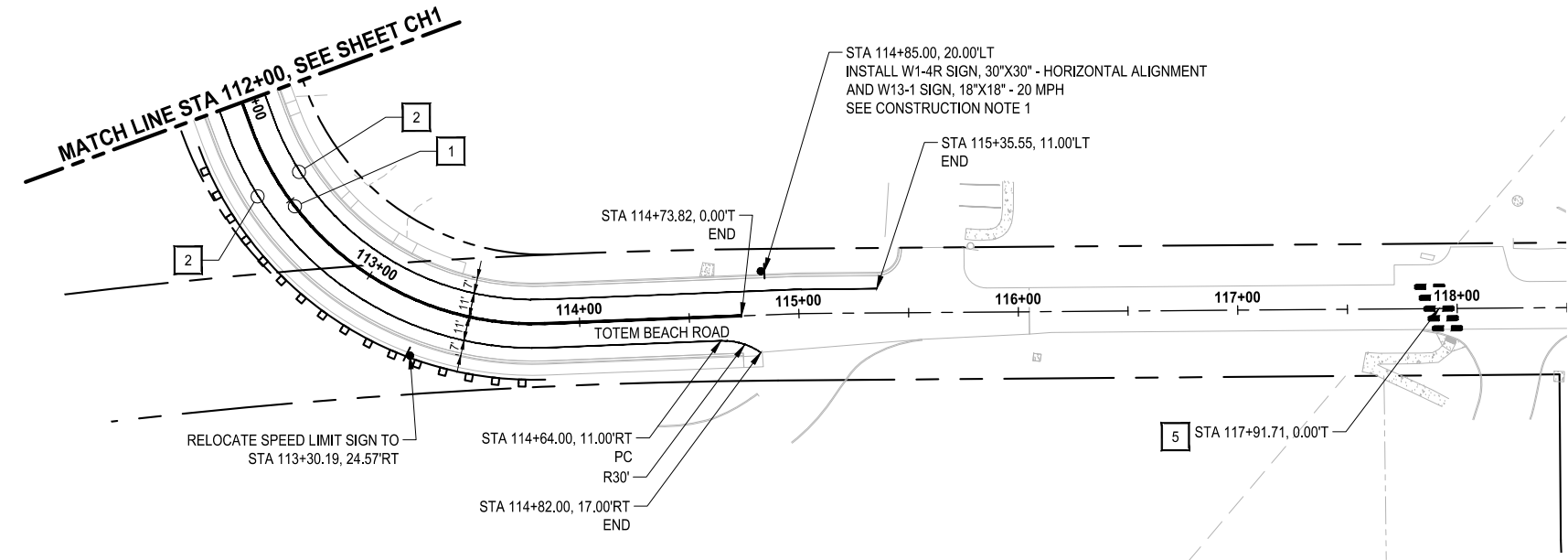
PROJECT NAME
**PAVEMENT REHABILITATION 2021
TOTEM BEACH RD
THE TULALIP TRIBES**
TULALIP, WASHINGTON

**CHANNELIZATION AND SIGNING
PLAN**

DRAWING NO.
19 OF 20

CH1

PATH: U:\PSO\Projects\Clients\1598-TulipTribes\1598-140-2021PmtRehabProjects\995\cs\CADD\DWG\TOTEM BEACH
 LAYOUT: CH2
 PLOTTED BY: SuelDimi DATE: Tuesday, April 26, 2022 4:44:12 PM



CHANNELIZATION NOTES:

- 1 PAINT DOUBLE YELLOW CENTERLINE PER WSDOT STD PLAN M-20.10-03.
- 2 PAINT WHITE EDGE LINE PER WSDOT STD PLAN M-20.10-03.
- 3 INSTALL PLASTIC STOP LINE PER WSDOT STD PLAN M-24.60-04.
- 4 INSTALL PLASTIC STANDARD 10 FT CROSSWALK PER SNOHOMISH CO STD PLAN 7-110.
- 5 INSTALL PLASTIC TRIPLE FOURS CROSSWALK PER SNOHOMISH CO STD PLAN 7-110.

CONSTRUCTION NOTES:

- 1. INSTALL SIGN POSTS PER SNOHOMISH CO STD PLAN 7-180A.



REVISIONS	DATE	BY	DESIGNED
			D. SUSLIKOV
			DRAWN D. SUSLIKOV
			CHECKED A. FISHER
			APPROVED H. LONGFELLOW

ONE INCH AT FULL SCALE. IF NOT, SCALE ACCORDINGLY
 FILE NAME: PU5541598140-TOTEM-CH
 JOB No: 554-1598-140
 DATE: APRIL 2022



Parametrix
 ENGINEERING · PLANNING · ENVIRONMENTAL SCIENCES
 1019 39TH AVENUE SE, SUITE 100 | PUYALLUP, WA 98374
 P 253.604.6600
 WWW.PARAMETRIX.COM

PROJECT NAME
PAVEMENT REHABILITATION 2021
TOTEM BEACH RD
THE TULALIP TRIBES
 TULALIP, WASHINGTON

CHANNELIZATION AND SIGNING
PLAN

DRAWING NO.
 20 OF 20
CH2